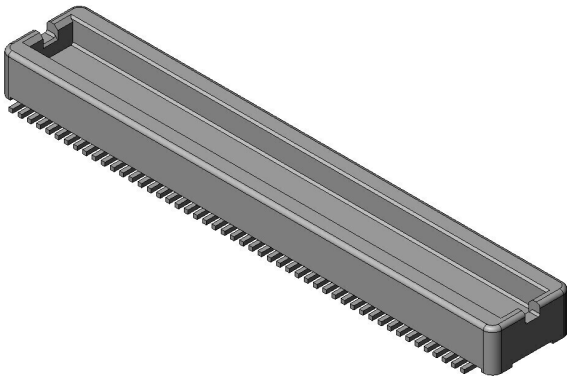


AC01S100WA1R3000

Product Details



Features

Board to Board connector, 100 pos., 0.5 mm pitch, Stacking height: 2.5mm and 3.0mm, Socket

Part Number	AC01S100WA1R3000
Status	Active
Number of Positions	100 pos.
Contact Pitch	0.5 mm
Rated Current	0.3 A/ pos.
Applications	Information and communication equipment, Factory automation equipment, Medical equipment (Ultrasonic diagnostic equipment), and other various electrical equipment.
Connector Type	Socket
Connector Style	Stacking
Number of Rows	Double row
PCB Mounting Method	Soldering (SMT)
Material of Contact	Copper alloy
Finish of Contact in Connecting Area	Gold plating
Material of Insulator	LCP
Color of Insulator	Black

Packaging Type	Embossed tape packaging
Quantity in The Standard Packaging	3,000 pieces/reel
RoHS compliant	10 substances (2011/65/EU, (EU)2015/863)
REACH compliant	240 substances (23/01/2024)
Combination	AC01P100WA1R3000 AC01P100WA1R500
Remarks	

Related information

Product Videos



Notice

1. The values specified in this web site are only for reference. The products and their specifications are subject to change without notice. Contact our sales staff for further information before considering or ordering any of our products.
For purchase, a product specification must be agreed upon.
2. Users are requested to provide protection circuits and redundancy circuits to ensure safety of the equipment, and sufficiently review the suitability of JAE's products to the equipment.
3. The products presented in this web site are designed for the uses recommended below.
We strongly suggest you contact our sales staff when considering use of any of the products in any other way than the recommended applications or for a specific use that requires an extremely high reliability.
 - (1) Applications that require consultation:
 - * Please contact us if you are considering use involving a quality assurance program that you specify or that is peculiar to the industry, such as:
Automotive electrical components, train control, telecommunications devices (mainline), traffic light control, electric power, combustion control, fire prevention or security systems, disaster evention equipment, etc.

* We may separately give you our support with a quality assurance program that you specify, when you think of a use such as :

Aviation or space equipment, submarine repeaters, nuclear power control systems, medical equipment for life support, etc.

(2) Recommended applications include:

* Computers, office appliances, telecommunications devices (terminals, mobile units), measuring equipment, audiovisual equipment, home electric appliances, factory automation equipment, etc