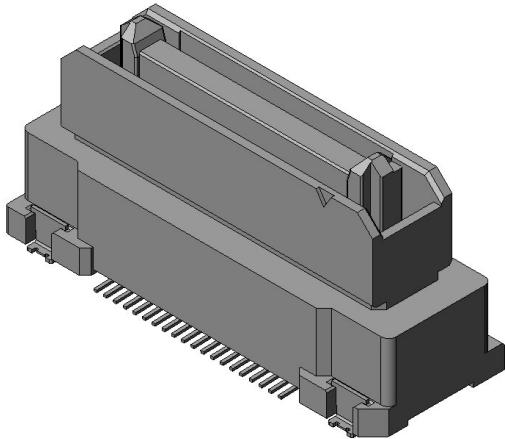


AX01F040VABBR300

Product Details



Features

Floating board-to-board connector, High-speed transmission, 40 pos., PCB mounted height: 12.3 mm, Floating side straight type

Part Number	AX01F040VABBR300
Status	Active(NRND)
Number of Positions	40 pos.
Contact Pitch	0.635 mm pitch
Rated Current	0.5 A
Rated Voltage	AC 50 Vr.m.s.
Applications	FA equipment, semiconductor manufacturing equipment, office machines, communication equipment, measuring equipment, broadcasting equipment, gaming and arcade machines, and other various applications
Connector Type	Floating side
Connector Style	Straight
PCB Mounting Method	Soldering (SMT)
Material of Contact	Copper alloy
Finish of Contact in Connecting Area	Gold plating
Minimum Thickness of The Plating Contact Area	0.1 micrometer min.

Finish of Contact in PCB Mounting Area	Gold plating
Material of Insulator	LCP
PCB Mounted Height	12.3 mm
Existence of Polarization Key	With Key
Existence of Location Boss	With Boss
PCB Boardlock Feature	Hold-down
Body Length	24.10 mm
Body Breadth	8.8 mm
Operating Temperature Range	-40 deg. C to +105 deg. C
Mating Cycles	100 mating cycles
Finish of Hold-down	Copper alloy/ Tin plating
Packaging Type	Embossed tape packaging
Quantity in The Standard Packaging	300 pieces/ reel
RoHS compliant	10 substances (2011/65/EU, (EU)2015/863)
REACH compliant	
Combination	AX01F040VAABR500 AX01F040VACBR150 AX01F040VABBR300 AX01R040VABBR600
Remarks	

Related information

Product Videos





AX01 Series

Notice

1. The values specified in this web site are only for reference. The products and their specifications are subject to change without notice. Contact our sales staff for further information before considering or ordering any of our products.

For purchase, a product specification must be agreed upon.

2. Users are requested to provide protection circuits and redundancy circuits to ensure safety of the equipment, and sufficiently review the suitability of JAE's products to the equipment.

3. The products presented in this web site are designed for the uses recommended below.

We strongly suggest you contact our sales staff when considering use of any of the products in any other way than the recommended applications or for a specific use that requires an extremely high reliability.

(1) Applications that require consultation:

- * Please contact us if you are considering use involving a quality assurance program that you specify or that is peculiar to the industry, such as:

Automotive electrical components, train control, telecommunications devices (mainline), traffic light control, electric power, combustion control, fire prevention or security systems, disaster evention equipment, etc.

- * We may separately give you our support with a quality assurance program that you specify, when you think of a use such as :

Aviation or space equipment, submarine repeaters, nuclear power control systems, medical equipment for life support, etc.

(2) Recommended applications include:

- * Computers, office appliances, telecommunications devices (terminals, mobile units), measuring equipment, audiovisual equipment, home electric appliances, factory automation equipment, etc