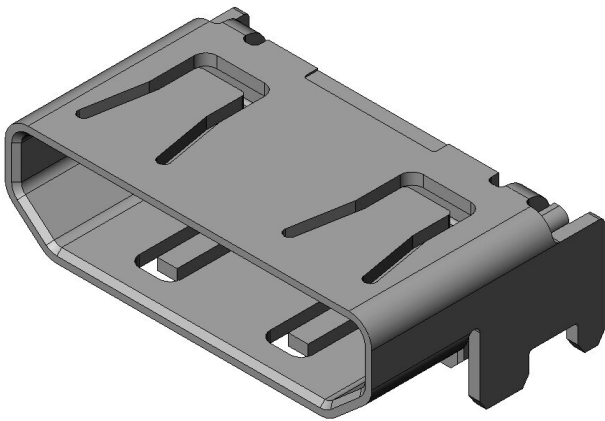


# DC2R019JA7R1700

## Product Details



### Features

Input/Output connector, HDMI standard Type C HDMI Mini connector, Shell DIP type, 19 pos., Receptacle

Part Number	DC2R019JA7R1700
Status	Active(NRND)
Number of Positions	19 pos.
Contact Pitch	0.4mm pitch
Rated Current	0.5 A/ pos.
Applicable Specifications	HDMI Mini Type C
Waterproof/ Non-waterproof	Non-waterproof
Applications	High-definition camcorder, digital still camera (single-lens reflex, compact), tablet PC, portable game device, etc.
Connector Type	Receptacle
Connector Style	Right angle
PCB Mounting Method	On-board type
Shell DIP Length	0.8 mm
Material of Insulator	9T Nylon (UL94 V0)
Material of Contact	Copper alloy
Contact Finish	Gold plating over Nickel

Shell, Material/ Finish	Copper alloy/ Tin plating over Nickel
Packaging Type	Embossed tape packaging (1,700 pieces/reel)
RoHS compliant	10 substances (2011/65/EU, (EU)2015/863)
REACH compliant	235 substances (14/06/2023)
Remarks	

### Notice

1. The values specified in this web site are only for reference. The products and their specifications are subject to change without notice. Contact our sales staff for further information before considering or ordering any of our products.

For purchase, a product specification must be agreed upon.

2. Users are requested to provide protection circuits and redundancy circuits to ensure safety of the equipment, and sufficiently review the suitability of JAE's products to the equipment.

3. The products presented in this web site are designed for the uses recommended below.  
We strongly suggest you contact our sales staff when considering use of any of the products in any other way than the recommended applications or for a specific use that requires an extremely high reliability.

#### (1) Applications that require consultation:

- \* Please contact us if you are considering use involving a quality assurance program that you specify or that is peculiar to the industry, such as:

Automotive electrical components, train control, telecommunications devices (mainline), traffic light control, electric power, combustion control, fire prevention or security systems, disaster evention equipment, etc.

- \* We may separately give you our support with a quality assurance program that you specify, when you think of a use such as :

Aviation or space equipment, submarine repeaters, nuclear power control systems, medical equipment for life support, etc.

#### (2) Recommended applications include:

- \* Computers, office appliances, telecommunications devices (terminals, mobile units), measuring equipment, audiovisual equipment, home electric appliances, factory automation equipment, etc