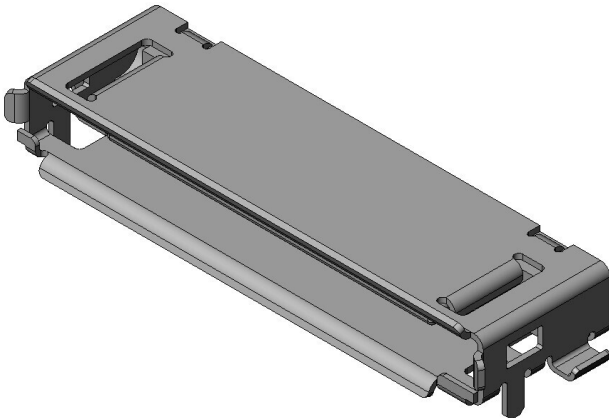


DD1R030HA1R1300

Product Details



Features

Input/Output Connector, Conforming to USB 2.0, 0.5mm pitch, 30 pos, With hold down, Receptacle

Part Number	DD1R030HA1R1300
Status	Active
Number of Positions	30 pos.
Contact Pitch (mm)	0.5
Rated Current (A)	Signal: 0.5, Power: 1.0
Rated Voltage (V)	AC 30
Applicable Specifications	USB2.0
Waterproof/ Non-waterproof	Non-waterproof
Applications	Compact portable devices typified by PDAs and HDD players
Connector Type	Receptacle
Connector Style	Right angle
Contact Type	
Wire Termination Style	-
Applicable Wire Size (AWG)	
SMD Flag	SMT · TH
PCB Mounting Method	Soldering

Mount Type	
Material of Contact	Copper alloy
Finish of Contact in Connecting Area	Gold plating over Nickel
Finish of Contact in PCB Mounting Area	Gold flash plating over Nickel
Finish of Contact in Terminal Area	
RoHS compliant	10 substances (2011/65/EU, (EU)2015/863)
REACH compliant	235 substances (14/06/2023)
Combination	DD1B030VA1 DD1P030MA1 DD1B030HA1R500
Remarks	With hold down

Notice

- The values specified in this web site are only for reference. The products and their specifications are subject to change without notice. Contact our sales staff for further information before considering or ordering any of our products.
For purchase, a product specification must be agreed upon.
- Users are requested to provide protection circuits and redundancy circuits to ensure safety of the equipment, and sufficiently review the suitability of JAE's products to the equipment.
- The products presented in this web site are designed for the uses recommended below.
We strongly suggest you contact our sales staff when considering use of any of the products in any other way than the recommended applications or for a specific use that requires an extremely high reliability.
 - Applications that require consultation:
 - * Please contact us if you are considering use involving a quality assurance program that you specify or that is peculiar to the industry, such as:
Automotive electrical components, train control, telecommunications devices (mainline), traffic light control, electric power, combustion control, fire prevention or security systems, disaster evention equipment, etc.
 - * We may separately give you our support with a quality assurance program that you specify, when you think of a use such as :

Aviation or space equipment, submarine repeaters, nuclear power control systems, medical equipment for life support, etc.

(2) Recommended applications include:

* Computers, office appliances, telecommunications devices (terminals, mobile units), measuring equipment, audiovisual equipment, home electric appliances, factory automation equipment, etc