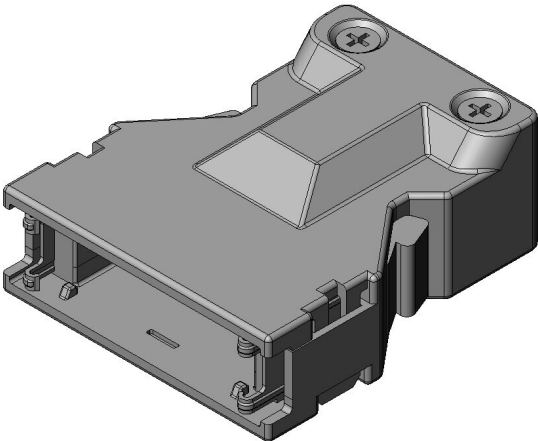


DF02D026A21

Product Details



Features

Input/Output connector, EMI countermeasure, Half-pitch (1.27mm), With EMI Shielding, Straight long, Spring lock, type, For 26 pos., Thick wire compatible, Hood

Part Number	DF02D026A21
Status	Active
Number of Positions	-
Contact Pitch (mm)	
Rated Current (A)	
Rated Voltage (V)	
Applicable Specifications	
Waterproof/ Non-waterproof	
Applications	Factory automation, semiconductor manufacturing and broadcasting equipment, as well as communication devices, measurement and other instrumentations.
Connector Type	Hood
Connector Style	Straight long Thic Cable
Contact Type	
Wire Termination Style	
Applicable Wire Size (AWG)	

Number of Rows	
PCB Mounting Method	
Material of Contact	
Finish of Contact in Connecting Area	
Shell, Material/ Finish	
Material of Insulator	
PCB Side Connector Style	
PCB Mounted Height (mm)	
Operating Temperature Range (deg. C)	
Dielectric Withstanding Voltage (VACr.m.s. Initial)	
Insulation Resistance (megaohm min. Initial)	
Contact Resistance (milliohm max. Initial)	
PCB Boardlock Feature	
Hood Type	EMI Shielded Hood
Lock Type	Lock spring
Applicable Cable	Thick wire compatible
Applicable Product Part Numbers	DF02P026F22A1,DF02P026G28A1
Use with Accessories	Please consult us
RoHS compliant	10 substances (2011/65/EU, (EU)2015/863)
REACH compliant	240 substances (23/01/2024)
Remarks	

Notice

1. The values specified in this web site are only for reference. The products and their specifications are subject to change without notice. Contact our sales staff for further information before considering or ordering any of our products.

For purchase, a product specification must be agreed upon.

2. Users are requested to provide protection circuits and redundancy circuits to ensure safety of the equipment, and sufficiently review the suitability of JAE's products to the equipment.
3. The products presented in this web site are designed for the uses recommended below. We strongly suggest you contact our sales staff when considering use of any of the products in any other way than the recommended applications or for a specific use that requires an extremely high reliability.

(1) Applications that require consultation:

- * Please contact us if you are considering use involving a quality assurance program that you specify or that is peculiar to the industry, such as:

Automotive electrical components, train control, telecommunications devices (mainline), traffic light control, electric power, combustion control, fire prevention or security systems, disaster evention equipment, etc.

- * We may separately give you our support with a quality assurance program that you specify, when you think of a use such as :

Aviation or space equipment, submarine repeaters, nuclear power control systems, medical equipment for life support, etc.

(2) Recommended applications include:

- * Computers, office appliances, telecommunications devices (terminals, mobile units), measuring equipment, audiovisual equipment, home electric appliances, factory automation equipment, etc