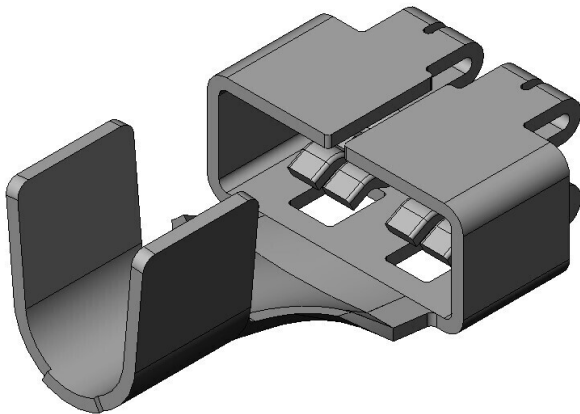


# DW05S01CAG1

## Product Details



### Features

High-current Connector, DW05Series, Socket Connector 150A Socket Contact

Part Number	DW05S01CAG1
Status	Active
Number of Positions	
Connector Type	Socket Connector Socket Contact
Material of Contact	Copper Alloy
Finish of Contact in Connecting Area	Silver plating
Material of Housing	
Color of Housing	
Wire Termination Styles	Crimp
Applicable Wire Size	AWG #2
Applicable Wire (Cross-sectional Area of Conductor)	26 to 42 mm <sup>2</sup>
Applicable Wire Insulation Diameter	13.0 mm max.
Applicable Housing	DW05S01CZZ1,DW05S01CZZ2
Applicable Contacts	

Mate to contact	DW05P01CAG1,DW05P01CAG2
RoHS compliant	10 substances (2011/65/EU, (EU)2015/863)
REACH compliant	
Remarks	

**Notice**

1. The values specified in this web site are only for reference. The products and their specifications are subject to change without notice. Contact our sales staff for further information before considering or ordering any of our products.  
For purchase, a product specification must be agreed upon.
2. Users are requested to provide protection circuits and redundancy circuits to ensure safety of the equipment, and sufficiently review the suitability of JAE's products to the equipment.
3. The products presented in this web site are designed for the uses recommended below.  
We strongly suggest you contact our sales staff when considering use of any of the products in any other way than the recommended applications or for a specific use that requires an extremely high reliability.  
  - (1) Applications that require consultation:
    - \* Please contact us if you are considering use involving a quality assurance program that you specify or that is peculiar to the industry, such as:  
Automotive electrical components, train control, telecommunications devices (mainline), traffic light control, electric power, combustion control, fire prevention or security systems, disaster evention equipment, etc.
    - \* We may separately give you our support with a quality assurance program that you specify, when you think of a use such as :  
Aviation or space equipment, submarine repeaters, nuclear power control systems, medical equipment for life support, etc.
  - (2) Recommended applications include:
    - \* Computers, office appliances, telecommunications devices (terminals, mobile units), measuring equipment, audiovisual equipment, home electric appliances, factory automation equipment, etc