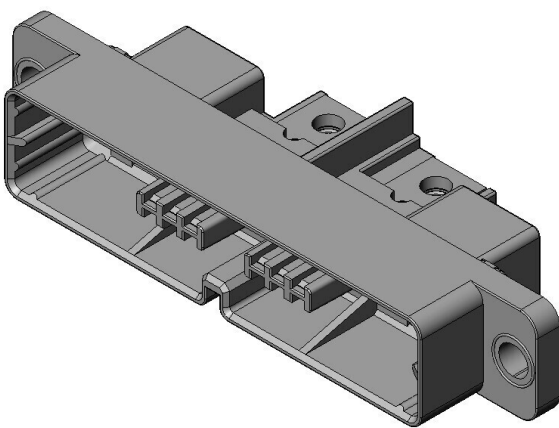


# DW3P002ZH1

## Product Details



### Features

High-current Connector, UL approved, Connector Main unitl , 2 pos., 150 A, Plug

Part Number	DW3P002ZH1
Status	Active
Number of Positions	2 pos.
Rated Current	150 A
Rated Voltage	600 V
Waterproof/ Non-waterproof	
Applications	
Connector Type	Connector main unit (Plug)
Material of Contact	Copper Alloy
Finish of Contact in Connecting Area	Silver plating
Material of Housing	PBT
Color of Housing	Black
Applicable Wire (Cross-sectional Area of Conductor)	
Applicable Wire Size	

Applicable Wire Insulation Diameter	
Applicable Product Part Numbers	
Applicable Housing	DW3R012A, DW3R012B
Applicable Contacts	
Mate to contact	
Applicable Accessory	
Contact Resistance	0.3 milliohm max.(initial)
Operating Temperature Range	-25 deg. C to +105 deg. C
Mating Cycles	100 times
Supply Type	
Quantity in The Standard Packaging	
RoHS compliant	10 substances (2011/65/EU, (EU)2015/863)
REACH compliant	
Combination	<a href="#">DW3R002ZH1</a>
Remarks	

Notice

- The values specified in this web site are only for reference. The products and their specifications are subject to change without notice. Contact our sales staff for further information before considering or ordering any of our products.  
For purchase, a product specification must be agreed upon.
- Users are requested to provide protection circuits and redundancy circuits to ensure safety of the equipment, and sufficiently review the suitability of JAE's products to the equipment.
- The products presented in this web site are designed for the uses recommended below.  
We strongly suggest you contact our sales staff when considering use of any of the products in any other way than the recommended applications or for a specific use that requires an extremely high reliability.  
(1) Applications that require consultation:

\* Please contact us if you are considering use involving a quality assurance program that you specify or that is peculiar to the industry, such as:

Automotive electrical components, train control, telecommunications devices (mainline), traffic light control, electric power, combustion control, fire prevention or security systems, disaster evention equipment, etc.

\* We may separately give you our support with a quality assurance program that you specify, when you think of a use such as :

Aviation or space equipment, submarine repeaters, nuclear power control systems, medical equipment for life support, etc.

(2) Recommended applications include:

\* Computers, office appliances, telecommunications devices (terminals, mobile units), measuring equipment, audiovisual equipment, home electric appliances, factory automation equipment, etc