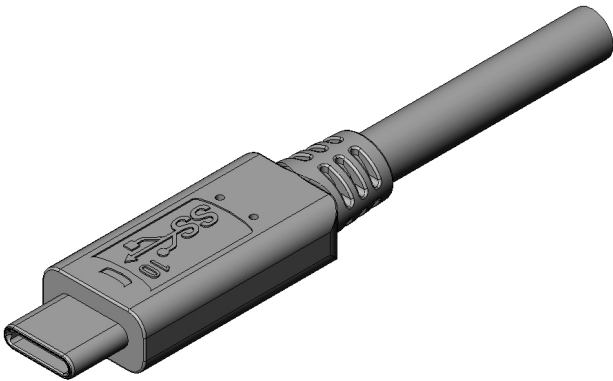


DX07518B10N19114

Product Details



Features

Input/Output Connector, USB Type-C connector, Cable harnesses, USB 3.2 Gen2 Type-C to Type-C, TPE Black, Length: 1 m

Part Number	DX07518B10N19114
Status	Active
Number of Positions	24 pos.
Rated Current	5 A max.
Rated Voltage	AC 20 Vr.m.s.
Applicable Specifications	USB 3.2
Waterproof/ Non-waterproof	
Applications	Smartphones, tablets, notebook PCs, TV, monitor, gaming devices, external storage mediums, digital cameras, and other small portable devices and industrial equipment
Connector Type	Cable harnesses
Connector Style	
PCB Mounting Method	-
Replacement	
USB-IF Certification	Certified
TID	5,210,000,570
Mounting Type	-

Center Height	-
Recommended Board Thickness	-
Finish of Contact in Connecting Area	Gold flash over Palladium Nickel over Nickel plating
Shell	
Contact Resistance	Initial 40 milliohm max.
Dielectric Withstanding Voltage	AC 40 Vr.m.s. (1 minute)
Insulation Resistance	Initial 10 megaohm min.
Operating Temperature Range	-20 deg. C to +50 deg. C
Mating Cycles	10,000 times
Packaging Type	
Quantity in The Standard Packaging	
RoHS compliant	6 substances (2011/65/EU, (EU)2015/863)
REACH compliant	
Combination	DX07S024XJ1R1100 DX07B024JJ2R1500 DX07B024JJ1R1500 DX07B024JJ3R1600 DX07B024XJ1R1300 DX07S024JJ3R1300 DX07S024WJ1R350 DX07S024JJ2R1300 DX07S024WJ3R400
Remarks	

Notice

1. The values specified in this web site are only for reference. The products and their specifications are subject to change without notice. Contact our sales staff for further information before

considering or ordering any of our products.

For purchase, a product specification must be agreed upon.

2. Users are requested to provide protection circuits and redundancy circuits to ensure safety of the equipment, and sufficiently review the suitability of JAE's products to the equipment.

3. The products presented in this web site are designed for the uses recommended below.

We strongly suggest you contact our sales staff when considering use of any of the products in any other way than the recommended applications or for a specific use that requires an extremely high reliability.

(1) Applications that require consultation:

- * Please contact us if you are considering use involving a quality assurance program that you specify or that is peculiar to the industry, such as:

Automotive electrical components, train control, telecommunications devices (mainline), traffic light control, electric power, combustion control, fire prevention or security systems, disaster evention equipment, etc.

- * We may separately give you our support with a quality assurance program that you specify, when you think of a use such as :

Aviation or space equipment, submarine repeaters, nuclear power control systems, medical equipment for life support, etc.

(2) Recommended applications include:

- * Computers, office appliances, telecommunications devices (terminals, mobile units), measuring equipment, audiovisual equipment, home electric appliances, factory automation equipment, etc