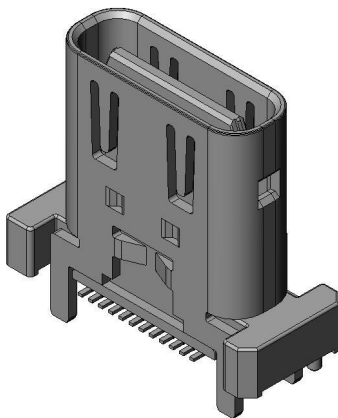


DX07S024WJ3R400

Product Details



Features

Vertical-Receptacle, USB Type-C connector, 24 pos., Height: 10 mm

Part Number	DX07S024WJ3R400
Status	Active
Number of Positions	24 pos.
Rated Current	5 A max.
Rated Voltage	48 Vr.m.s.
Applicable Specifications	USB 3.2 Gen2 Type-C
Waterproof/ Non-waterproof	
Applications	Monitors, hubs, wall outlets, USB chargers, printers, POS terminal, and others
Connector Type	Receptacle
Connector Style	Straight
PCB Mounting Method	2 row SMT
Replacement	
USB-IF Certification	Certified
TID	5,200,000,400
Mounting Type	On-board
Center Height	

Recommended Board Thickness	
Finish of Contact in Connecting Area	Au flash over Palladium Ni over Ni
Shell	Nickel plating
Contact Resistance	40mΩ max. (initial)
Dielectric Withstanding Voltage	AC 100 Vr.m.s. (1 minute)
Insulation Resistance	100 MΩ (initial)
Operating Temperature Range	-30°C to +85°C
Mating Cycles	10,000 times
Packaging Type	Embossed tape packaging
Quantity in The Standard Packaging	400 pcs./reel
RoHS compliant	10 substances (2011/65/EU, (EU)2015/863)
REACH compliant	235 substances (14/06/2023)
Combination	DX07518B10N19114 DX07518S20K18747 DX07P024AJ5R1500 DX07518B20K19114 DX07518S10N18747
Remarks	Ground Connection: Shell spring

Related information

Product Videos





Notice

1. The values specified in this web site are only for reference. The products and their specifications are subject to change without notice. Contact our sales staff for further information before considering or ordering any of our products.

For purchase, a product specification must be agreed upon.

2. Users are requested to provide protection circuits and redundancy circuits to ensure safety of the equipment, and sufficiently review the suitability of JAE's products to the equipment.

3. The products presented in this web site are designed for the uses recommended below.

We strongly suggest you contact our sales staff when considering use of any of the products in any other way than the recommended applications or for a specific use that requires an extremely high reliability.

(1) Applications that require consultation:

- * Please contact us if you are considering use involving a quality assurance program that you specify or that is peculiar to the industry, such as:

Automotive electrical components, train control, telecommunications devices (mainline), traffic light control, electric power, combustion control, fire prevention or security systems, disaster evention equipment, etc.

- * We may separately give you our support with a quality assurance program that you specify, when you think of a use such as :

Aviation or space equipment, submarine repeaters, nuclear power control systems, medical equipment for life support, etc.

(2) Recommended applications include:

- * Computers, office appliances, telecommunications devices (terminals, mobile units), measuring equipment, audiovisual equipment, home electric appliances, factory

automation equipment, etc