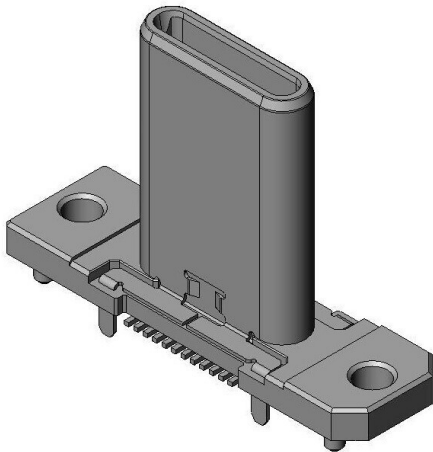


DX07VN24WA2C1568

Product Details



Features

Input/Output Connector, USB Type-C connector, 24 pos., 2-row SMT, Vertical Plug

Part Number	DX07VN24WA2C1568
Status	Active
Number of Positions	24 pos.
Rated Current	VBUS (Terminal No. A4, A9, B4, B9) DC 5A(Total),GND (Terminal No. A1,A12,B1,B12) DC 6.25A(Total),VCONN (Terminal No. B5) DC 1.25A,Others DC 0.25A/pin
Rated Voltage	20 Vr.m.s.
Applicable Specifications	USB 3.2
Waterproof/ Non-waterproof	
Applications	Docking stations and accessories for Smartphones, tablets, PCs, camcorders, digital still cameras, and others
Connector Type	Plug
Connector Style	Vertical
PCB Mounting Method	2 row SMT Vertical
Replacement	
USB-IF Certification	
TID	
Mounting Type	On-board

Center Height	
Recommended Board Thickness	-
Finish of Contact in Connecting Area	Gold plating over Nickel
Shell	
Contact Resistance	40 milliohm max. initial
Dielectric Withstanding Voltage	AC 100 Vr.m.s. (1 minute)
Insulation Resistance	100 MΩ (initial)
Operating Temperature Range	-30 deg. C to +80 deg. C
Mating Cycles	10,000 times
Packaging Type	Tray
Quantity in The Standard Packaging	1,568 pcs./tray
RoHS compliant	10 substances (2011/65/EU, (EU)2015/863)
REACH compliant	233 substances (17/01/2023)
Remarks	

Related information

Product Videos



Notice

1. The values specified in this web site are only for reference. The products and their specifications are subject to change without notice. Contact our sales staff for further information before

considering or ordering any of our products.

For purchase, a product specification must be agreed upon.

2. Users are requested to provide protection circuits and redundancy circuits to ensure safety of the equipment, and sufficiently review the suitability of JAE's products to the equipment.

3. The products presented in this web site are designed for the uses recommended below.

We strongly suggest you contact our sales staff when considering use of any of the products in any other way than the recommended applications or for a specific use that requires an extremely high reliability.

(1) Applications that require consultation:

- * Please contact us if you are considering use involving a quality assurance program that you specify or that is peculiar to the industry, such as:

Automotive electrical components, train control, telecommunications devices (mainline), traffic light control, electric power, combustion control, fire prevention or security systems, disaster evention equipment, etc.

- * We may separately give you our support with a quality assurance program that you specify, when you think of a use such as :

Aviation or space equipment, submarine repeaters, nuclear power control systems, medical equipment for life support, etc.

(2) Recommended applications include:

- * Computers, office appliances, telecommunications devices (terminals, mobile units), measuring equipment, audiovisual equipment, home electric appliances, factory automation equipment, etc