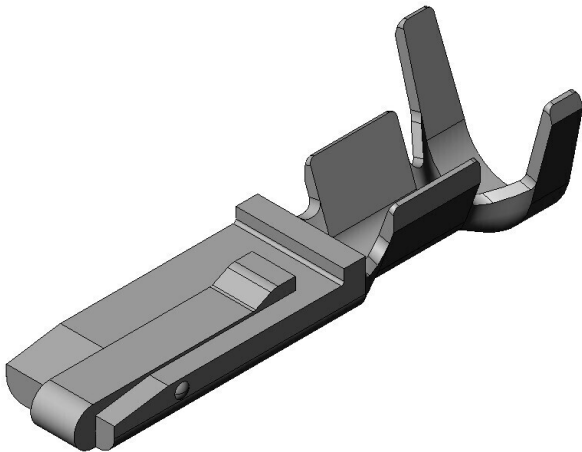


# ES5P09K5F1

## Product Details



### Features

Low-profile 1 pin connector, ULus certified, 1 pos., Cable side plug contact

Part Number	ES5P09K5F1
Status	Active
Number of Positions	1 pos.
Rated Current (A)	4A
Connector Type	Cable side plug contact
Connector Style	
Wire Termination Style	Crimp
PCB Mounting Method	-
Material of Contact	Copper alloy
Finish of Contact in Connecting Area	Tin plating
Finish of Contact in PCB Mounting Area	-
Finish of Contact in Terminal Area	Tin plating
Contact Resistance (milliohm max.)	30

Mating Cycles (times)	20
Operating Temperature Range (deg. C)	-40 to +105 Deg. C
Packaging Type	Reel
Quantity in The Standard Packaging (pieces)	9,000 pieces / reel
RoHS compliant	10 substances (2011/65/EU, (EU)2015/863)
REACH compliant	
Combination	<a href="#">ES5S001JF1R5500</a>
Remarks	

### Notice

1. The values specified in this web site are only for reference. The products and their specifications are subject to change without notice. Contact our sales staff for further information before considering or ordering any of our products.

For purchase, a product specification must be agreed upon.

2. Users are requested to provide protection circuits and redundancy circuits to ensure safety of the equipment, and sufficiently review the suitability of JAE's products to the equipment.

3. The products presented in this web site are designed for the uses recommended below. We strongly suggest you contact our sales staff when considering use of any of the products in any other way than the recommended applications or for a specific use that requires an extremely high reliability.

#### (1) Applications that require consultation:

- \* Please contact us if you are considering use involving a quality assurance program that you specify or that is peculiar to the industry, such as:

Automotive electrical components, train control, telecommunications devices (mainline), traffic light control, electric power, combustion control, fire prevention or security systems, disaster evention equipment, etc.

- \* We may separately give you our support with a quality assurance program that you specify, when you think of a use such as :

Aviation or space equipment, submarine repeaters, nuclear power control systems, medical equipment for life support, etc.

#### (2) Recommended applications include:

- \* Computers, office appliances, telecommunications devices (terminals, mobile units), measuring equipment, audiovisual equipment, home electric appliances, factory

automation equipment, etc