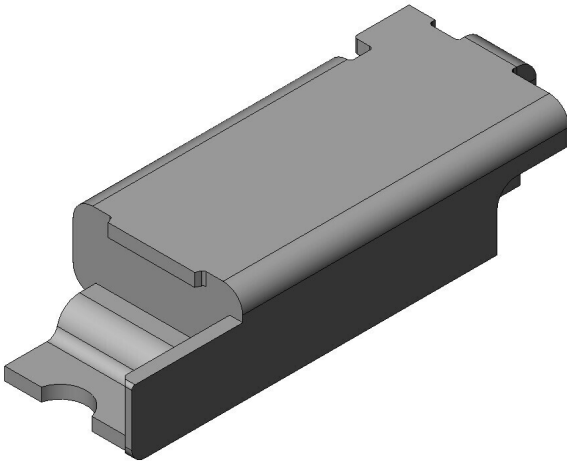


ES5S001JFAR5500

Product Details



Features

Low-profile 1 pin connector, ULus certified, 1 pos., Board side receptacle

Part Number	ES5S001JFAR5500
Status	Active
Number of Positions	1 pos.
Rated Current (A)	6A
Connector Type	Board side receptacle
Connector Style	Right angle
Wire Termination Style	
Applicable Wire Diameter	
PCB Mounting Method	Soldering (SMT)
Material of Contact	Copper alloy
Finish of Contact in Connecting Area	Tin plating
Finish of Contact in PCB Mounting Area	Tin plating
Finish of Contact in Terminal Area	

Contact Resistance (milliohm max.)	30
Mating Cycles (times)	20
Operating Temperature Range (deg. C)	-40 to +105
Packaging Type	Embossed tape packaging
Quantity in The Standard Packaging (pieces)	5,500 pieces/reel
RoHS compliant	10 substances (2011/65/EU, (EU)2015/863)
REACH compliant	
Combination	ES5P09K5FA ES5P09K4F2
Remarks	

Notice

1. The values specified in this web site are only for reference. The products and their specifications are subject to change without notice. Contact our sales staff for further information before considering or ordering any of our products.
For purchase, a product specification must be agreed upon.
2. Users are requested to provide protection circuits and redundancy circuits to ensure safety of the equipment, and sufficiently review the suitability of JAE's products to the equipment.
3. The products presented in this web site are designed for the uses recommended below.
We strongly suggest you contact our sales staff when considering use of any of the products in any other way than the recommended applications or for a specific use that requires an extremely high reliability.
 - (1) Applications that require consultation:
 - * Please contact us if you are considering use involving a quality assurance program that you specify or that is peculiar to the industry, such as:
Automotive electrical components, train control, telecommunications devices (mainline), traffic light control, electric power, combustion control, fire prevention or security systems, disaster evention equipment, etc.
 - * We may separately give you our support with a quality assurance program that you specify, when you think of a use such as :
Aviation or space equipment, submarine repeaters, nuclear power control systems, medical equipment for life support, etc.

(2) Recommended applications include:

- * Computers, office appliances, telecommunications devices (terminals, mobile units), measuring equipment, audiovisual equipment, home electric appliances, factory automation equipment, etc