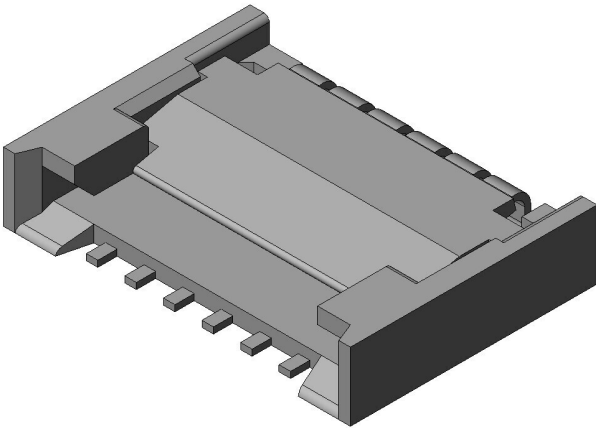


FA1006SA1-R8000

Product Details



Features

FPC connector, One-action LIF structure (non-sliding point of contact), 6 pos., 0.5 mm pitch, 0.9 mm height

Part Number	FA1006SA1-R8000
Status	Active
Number of Positions	6 pos.
Contact Pitch (mm)	0.5
Rated Current (A)	0.5
FPC Entry Angle	Top and bottom-surface connection
ZIF/ Non-ZIF/ LIF	LIF
Applicable FPC Thickness (mm)	0.2±0.03
PCB Mounting Method	Soldering (SMT)
Staggered Pattern	No
Material of Contact	Copper Alloy
Finish of Contact in Connecting Area	Partial Gold plating over Nickel
Finish of Contact in PCB Mounting Area	Partial Gold plating over Nickel
Material of Housing	Heat-resistant resin

Color of Housing	Black
Body Length (mm)	4.5
Body Breadth (mm)	3.2
Body Height (mm)	0.9
Contact Resistance (milliohm)	70
Dielectric Withstanding Voltage (V)	250
Operating Temperature Range (deg. C)	-40 to +85
Packaging Type	Embossed tape packaging
Quantity in The Standard Packaging (pieces)	8000
RoHS compliant	10 substances (2011/65/EU, (EU)2015/863)
REACH compliant	240 substances (23/01/2024)
Remarks	

Notice

1. The values specified in this web site are only for reference. The products and their specifications are subject to change without notice. Contact our sales staff for further information before considering or ordering any of our products.
For purchase, a product specification must be agreed upon.
2. Users are requested to provide protection circuits and redundancy circuits to ensure safety of the equipment, and sufficiently review the suitability of JAE's products to the equipment.
3. The products presented in this web site are designed for the uses recommended below.
We strongly suggest you contact our sales staff when considering use of any of the products in any other way than the recommended applications or for a specific use that requires an extremely high reliability.
(1) Applications that require consultation:
 - * Please contact us if you are considering use involving a quality assurance program that you specify or that is peculiar to the industry, such as:
Automotive electrical components, train control, telecommunications devices (mainline), traffic light control, electric power, combustion control, fire prevention or security systems, disaster evention equipment, etc.

* We may separately give you our support with a quality assurance program that you specify, when you think of a use such as :

Aviation or space equipment, submarine repeaters, nuclear power control systems, medical equipment for life support, etc.

(2) Recommended applications include:

* Computers, office appliances, telecommunications devices (terminals, mobile units), measuring equipment, audiovisual equipment, home electric appliances, factory automation equipment, etc