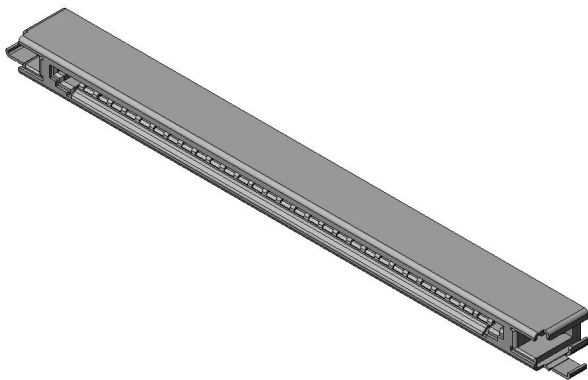


FI-X30SSLA-HF

Product Details



Features

Board-to-Cable connector, for Input/Output of LCD, Standard type (Board face mounting), 30 pos., 1.0mm pitch, Board side receptacle

Part Number	FI-X30SSLA-HF
Status	Active
Number of Positions	30 pos.
Contact Pitch (mm)	1.0 mm
Connector Type	Board side receptacle
Connector Style	Right angle
Wire Termination Style	-
PCB Mounting Method	Soldering (SMT)
Applicable Wire	-
Applicable Wire Size	-
Applicable Wire Insulation Diameter (mm)	-
Remarks on Applicable Wire	-
Material of Contact	Copper alloy
Finish of Contact in Connecting Area	Gold plating over Nickel

3. The products presented in this web site are designed for the uses recommended below. We strongly suggest you contact our sales staff when considering use of any of the products in any other way than the recommended applications or for a specific use that requires an extremely high reliability.

(1) Applications that require consultation:

- * Please contact us if you are considering use involving a quality assurance program that you specify or that is peculiar to the industry, such as:

Automotive electrical components, train control, telecommunications devices (mainline), traffic light control, electric power, combustion control, fire prevention or security systems, disaster evention equipment, etc.

- * We may separately give you our support with a quality assurance program that you specify, when you think of a use such as :

Aviation or space equipment, submarine repeaters, nuclear power control systems, medical equipment for life support, etc.

(2) Recommended applications include:

- * Computers, office appliances, telecommunications devices (terminals, mobile units), measuring equipment, audiovisual equipment, home electric appliances, factory automation equipment, etc