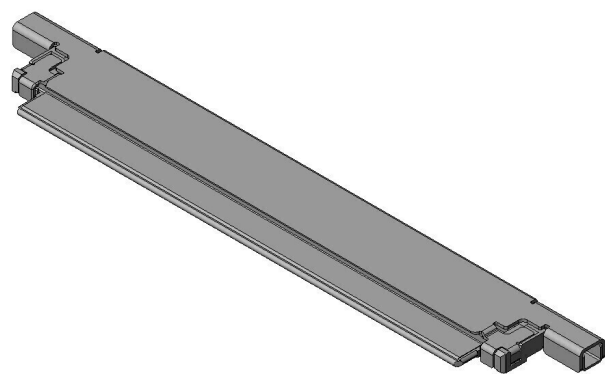


# HD1P040MA1R6000

## Product Details



### Features

Board-to-Cable connector, Products licensed by Dai-ichi Seiko Co., Ltd. (I-PEX) Fully compatible with the Dai-ichi Seiko Co., Ltd. (I-PEX) CABLINE-VS Compatible with LVDS transmission, 40 pos., Board side receptacle

Part Number	HD1P040MA1R6000
Status	Active(NRND)
Number of Positions	40 pos.
Contact Pitch (mm)	0.5
Rated Voltage (V)	100
Connector Type	Cable side plug
Connector Style	-
Wire Termination Style	Soldering
Applicable Wire Size (AWG)	#36 to #32 AWG (discrete wire), #44 to #36 AWG (fine-wire coaxial)
PCB Mounting Method	-
Number of Rows	1 row
Applicable Wire	Discrete wire, Fine-wire coaxial
Material of Contact	Copper alloy
Finish of Contact in Connecting Area	Gold plating over Nickel
Shell, Material/ Finish	Copper alloy/ Gold plating over Nickel

Material of Housing	Heat resisting plastic
PCB Mounted Height (mm)	-
PCB Boardlock Feature	-
Electro Magnetic Shield Function	Yes
Use with Accessories	HD1P040-CSH2-10000
Applicable Product Part Numbers	-
RoHS compliant	10 substances (2011/65/EU, (EU)2015/863)
REACH compliant	240 substances (23/01/2024)
Combination	<a href="#">HD1S040HA1R6000</a>
Remarks	LICENCED BY DAI-ICHI SEIKO CO.,LTD. (I-PEX)

Notice

1. The values specified in this web site are only for reference. The products and their specifications are subject to change without notice. Contact our sales staff for further information before considering or ordering any of our products.  
For purchase, a product specification must be agreed upon.
2. Users are requested to provide protection circuits and redundancy circuits to ensure safety of the equipment, and sufficiently review the suitability of JAE's products to the equipment.
3. The products presented in this web site are designed for the uses recommended below.  
We strongly suggest you contact our sales staff when considering use of any of the products in any other way than the recommended applications or for a specific use that requires an extremely high reliability.  
  - (1) Applications that require consultation:
    - \* Please contact us if you are considering use involving a quality assurance program that you specify or that is peculiar to the industry, such as:  
Automotive electrical components, train control, telecommunications devices (mainline), traffic light control, electric power, combustion control, fire prevention or security systems, disaster evention equipment, etc.
    - \* We may separately give you our support with a quality assurance program that you specify, when you think of a use such as :  
Aviation or space equipment, submarine repeaters, nuclear power control systems, medical equipment for life support, etc.

(2) Recommended applications include:

- \* Computers, office appliances, telecommunications devices (terminals, mobile units), measuring equipment, audiovisual equipment, home electric appliances, factory automation equipment, etc