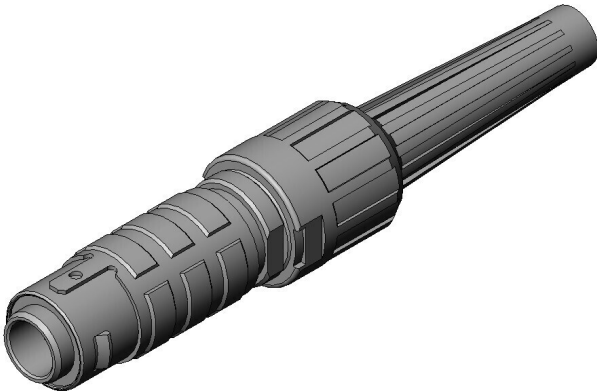


# JB5DS08MN11

## Product Details



### Features

Circular connector, IP68, Small size, waterproof, panel-to-cable, push-pull mating structure, solder type, 8 pos., Straight plug

Part Number	JB5DS08MN11
Status	Active
Number of Positions	8 pos.
Contact Pitch (mm)	
Rated Current (A)	2A / pos. max.
Rated Voltage (V)	200 VAC
Applicable Specifications	
Waterproof/ Non-waterproof	IP68 (Mated)
Applications	-
Connector Type	Straight plug
Connector Style	
Contact Type	Plug
Termination Style	Soldering
Applicable Wire Size (AWG)	#28 max.
Applicable Shell Size	S
Coupling Style	Push- pull lock

Contact Arrangement Code	
Contact Size X No. of Contacts	#26 X 8
Contact Size	#26
Applicable Wire Size (mm <sup>2</sup> )	
Applicable Wire Insulation Diameter (mm)	
Finish of Contact in Connecting Area	Gold plating over Nickel
Total Current Rating (A)	
Dielectric Withstanding Voltage (VACr.m.s. 1minute)	750
Insulation Resistance (megaohm min.)	1,000
Contact Resistance (milliohm max.)	
Operating Temperature Range (deg. C)	-55 deg. C to +85 deg. C
Alternative Insert Position (deg.)	0
Connector Color	
Applicable Contacts	
Applicable Accessory	
Contact, Strip/ Loose Piece	
Tool Type	
Accessory Type	
RoHS compliant	10 substances (2011/65/EU, (EU)2015/863)
REACH compliant	
Remarks	Boot color: Black

1. The values specified in this web site are only for reference. The products and their specifications are subject to change without notice. Contact our sales staff for further information before considering or ordering any of our products.

For purchase, a product specification must be agreed upon.

2. Users are requested to provide protection circuits and redundancy circuits to ensure safety of the equipment, and sufficiently review the suitability of JAE's products to the equipment.
3. The products presented in this web site are designed for the uses recommended below. We strongly suggest you contact our sales staff when considering use of any of the products in any other way than the recommended applications or for a specific use that requires an extremely high reliability.

(1) Applications that require consultation:

- \* Please contact us if you are considering use involving a quality assurance program that you specify or that is peculiar to the industry, such as:

Automotive electrical components, train control, telecommunications devices (mainline), traffic light control, electric power, combustion control, fire prevention or security systems, disaster evention equipment, etc.

- \* We may separately give you our support with a quality assurance program that you specify, when you think of a use such as :

Aviation or space equipment, submarine repeaters, nuclear power control systems, medical equipment for life support, etc.

(2) Recommended applications include:

- \* Computers, office appliances, telecommunications devices (terminals, mobile units), measuring equipment, audiovisual equipment, home electric appliances, factory automation equipment, etc