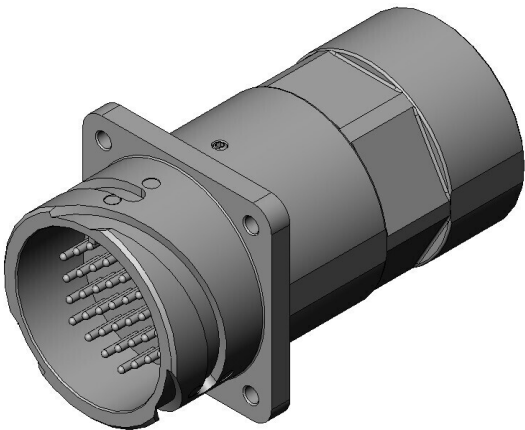


JK06KK37PW1

Product Details



Features

VG95234 Qualified Circular Waterproof Connector, 37 pos., Pin Contact, Conduit Compatible Receptacle, Insert Rotation Position: W

Part Number	JK06KK37PW1
Status	Active
Number of Positions	37 pos.
Rated Current	13 A
Waterproof/ Non-waterproof	IP67 rated in mated condition
Connector Type	Conduit Compatible Receptacle
Connector Style	
Contact Type	Pin
Wire Termination Method	Crimp
Applicable Wire Size (AWG)	#16 to #14
Coupling Style	Bayonet lock
Contact Size	#16
Shell Size	K: 28 size
MIL-spec Arrangement Code	28 - 21
Contact Size X No. of Contacts	#16 X 37

Applicable Wire (Cross-sectional Area of Conductor)	1.25 mm² to 2.0 mm²
Insert Rotation Position	W position
Material of Contact	Copper alloy
Finish of Contact in Connecting Area	Silver plating
Outer Shell Color	Black system interference color
Total Current Rating	96.2 A max.
Contact Resistance	2.5 milliohm max.
Dielectric Withstanding Voltage (1 minute)	A.C. 2550 Vr.m.s
Insulation Resistance	5000 megohm min.
Mating Durability	Mating cycles: 500 times
Operating Temperature Range	-40 deg. C to +100 deg. C
Applicable Accessory	JK06-K-DR, J225-50124
RoHS compliant	10 substances (2011/65/EU, (EU)2015/863)
REACH compliant	
Combination	JK06DK37SW1 JK06DK37SW2 JK06DK37SW5-F0 JK06EK37SW1 JK06EK37SW2-F0
Remarks	

Related information

Product Videos



Notice

1. The values specified in this web site are only for reference. The products and their specifications are subject to change without notice. Contact our sales staff for further information before considering or ordering any of our products.

For purchase, a product specification must be agreed upon.

2. Users are requested to provide protection circuits and redundancy circuits to ensure safety of the equipment, and sufficiently review the suitability of JAE's products to the equipment.

3. The products presented in this web site are designed for the uses recommended below. We strongly suggest you contact our sales staff when considering use of any of the products in any other way than the recommended applications or for a specific use that requires an extremely high reliability.

(1) Applications that require consultation:

- * Please contact us if you are considering use involving a quality assurance program that you specify or that is peculiar to the industry, such as:

Automotive electrical components, train control, telecommunications devices (mainline), traffic light control, electric power, combustion control, fire prevention or security systems, disaster evention equipment, etc.

- * We may separately give you our support with a quality assurance program that you specify, when you think of a use such as :

Aviation or space equipment, submarine repeaters, nuclear power control systems, medical equipment for life support, etc.

(2) Recommended applications include:

- * Computers, office appliances, telecommunications devices (terminals, mobile units), measuring equipment, audiovisual equipment, home electric appliances, factory automation equipment, etc