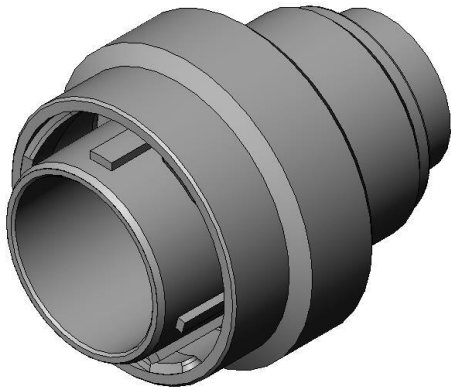


JL05-6A18-1PC-F0-R

Product Details



Features

Individual plug (Waterproof (mated)), Shell size : 18, Pin Contact (Sold separately), 10 pos.

Part Number	JL05-6A18-1PC-F0-R
Status	Active
Number of Positions	10 pos.
Rated Current (per contact), when embedded in the insulator	Contact Size #16 13 A max. [Applicable Wire (Cross-sectional Area of Conductor) : 2 mm ² , 1.25 mm ²] 10 A max. [Applicable Wire (Cross-sectional Area of Conductor) : 0.8 mm ²] 7.5 A max. [Applicable Wire (Cross-sectional Area of Conductor) : 0.5 mm ²] 5 A max. [Applicable Wire (Cross-sectional Area of Conductor) : 0.3 mm ²] 3 A max. [Applicable Wire (Cross-sectional Area of Conductor) : 0.2 mm ²] (For the total capacity of current that can flow through the entire connector, please contact us separately.)
Waterproof/ Non-waterproof	Waterproof (mated condition)
Connector Type	Individual plug
Shell Size	18
Contact Arrangement Code	18 - 1
Contact Type	Pin
insert rotation position (degrees)	-

Contact Size	#16
Contact Size X No. of Contacts	#16*10
Wire Termination Method	Crimp
Applicable Wire Size (AWG/Cross-sectional Area of Conductor/Insulation outer diameter)	Contact Size #16 C1... #16 to #14AWG / 1.25 mm ² to 2 mm ² / Φ3.8 mm max. C2... #20 to #16AWG / 0.5 mm ² to 1.25mm ² / Φ3.8 mm max. C3... #24 to #20AWG / 0.2 mm ² to 0.5 mm ² / Φ3.8 mm max.
Hand Crimping Tool	-
Semi-automatic Crimp tool	-
Outer Shell Color	Black system interference color
Material of Contact	-
Finish of Contact in Connecting Area	-
Contact Resistance	-
Dielectric Withstanding Voltage (1 minute)	AC 2,000 Vr.m.s. (Terminals No. 3, 5, 6, 8), AC 1,000 Vr.m.s. (Other terminals)
Insulation Resistance	5,000 megohm min.
Operating Temperature Range	-55 Deg. C to +125 Deg. C
Applicable Contacts	ST-JL05-16P-C1-100, ST-JL05-16P-C1-100-(A534G), ST-JL05-16P-C1-3500 ST-JL05-16P-C2-100, ST-JL05-16P-C2-3500 ST-JL05-16P-C3-100, ST-JL05-16P-C3-100-(A534G), ST-JL05-16P-C3-3500
Applicable Accessory	JL05-18EB3B-(11)-RK, JL05-18EB1A-R + N/MS3057-10A
Applicable Product Part Numbers	
RoHS compliant	10 substances (2011/65/EU, (EU)2015/863)
REACH compliant	
Combination	JL05-1A18-1SC-F0-RK JL05-2A18-1SC-F0-RK
Remarks	No contact (Sold separately)

1. The values specified in this web site are only for reference. The products and their specifications are subject to change without notice. Contact our sales staff for further information before considering or ordering any of our products.

For purchase, a product specification must be agreed upon.

2. Users are requested to provide protection circuits and redundancy circuits to ensure safety of the equipment, and sufficiently review the suitability of JAE's products to the equipment.
3. The products presented in this web site are designed for the uses recommended below. We strongly suggest you contact our sales staff when considering use of any of the products in any other way than the recommended applications or for a specific use that requires an extremely high reliability.

(1) Applications that require consultation:

- * Please contact us if you are considering use involving a quality assurance program that you specify or that is peculiar to the industry, such as:

Automotive electrical components, train control, telecommunications devices (mainline), traffic light control, electric power, combustion control, fire prevention or security systems, disaster evention equipment, etc.

- * We may separately give you our support with a quality assurance program that you specify, when you think of a use such as :

Aviation or space equipment, submarine repeaters, nuclear power control systems, medical equipment for life support, etc.

(2) Recommended applications include:

- * Computers, office appliances, telecommunications devices (terminals, mobile units), measuring equipment, audiovisual equipment, home electric appliances, factory automation equipment, etc