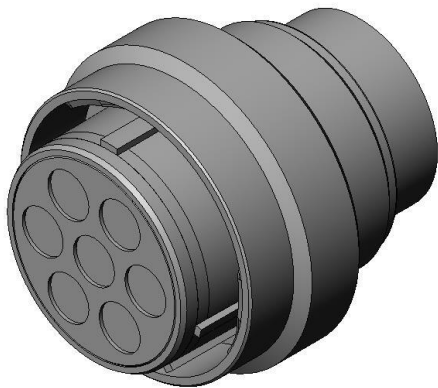


JL05-6A24-10SC-F0-R

Product Details



Features

Individual plug (Waterproof (mated)), Shell size : 24, Socket Contact (Sold separately), 7 pos.

| | |
|---|---|
| Part Number | JL05-6A24-10SC-F0-R |
| Status | Active |
| Number of Positions | 7 pos. |
| Rated Current (per contact), when embedded in the insulator | Contact Size #8 46 A max. [Applicable Wire (Cross-sectional Area of Conductor) : 8 mm ²] 33 A max. [Applicable Wire (Cross-sectional Area of Conductor) : 5.5 mm ²] 23 A max. [Applicable Wire (Cross-sectional Area of Conductor) : 3.5 mm ²] (For the total capacity of current that can flow through the entire connector, please contact us separately.) |
| Waterproof/ Non-waterproof | Waterproof (mated condition) |
| Connector Type | Individual plug |
| Shell Size | 24 |
| Contact Arrangement Code | 24 - 10 |
| Contact Type | Socket |
| insert rotation position (degrees) | - |
| Contact Size | #8 |
| Contact Size X No. of Contacts | #8*7 |

| | |
|---|--|
| Wire Termination Method | Crimp |
| Applicable Wire Size (AWG/Cross-sectional Area of Conductor/Insulation outer diameter) | Contact Size #8 C1... #10 to #8AWG / 5.5 mm ² to 8 mm ² / Ø7.25 mm max. C2... #12 to #10AWG / 3.5 mm ² to 5.5 mm ² / Ø7.25 mm max. |
| Hand Crimping Tool | - |
| Semi-automatic Crimp tool | - |
| Outer Shell Color | Black system interference color |
| Material of Contact | - |
| Finish of Contact in Connecting Area | - |
| Contact Resistance | - |
| Dielectric Withstanding Voltage (1 minute) | AC 2,000 Vr.m.s. |
| Insulation Resistance | 5,000 megohm min. |
| Operating Temperature Range | -55 Deg. C to +125 Deg. C |
| Applicable Contacts | CONT-JL05-08S-C1-10, CONT-JL05-08S-C2-10 |
| Applicable Accessory | JL05-24EB3B-(**)-RK, JL05-24EB1A-R + N/MS3057-16A,JL05-24EB2A-R + N/MS3057-16A |
| Applicable Product Part Numbers | |
| RoHS compliant | 10 substances (2011/65/EU, (EU)2015/863) |
| REACH compliant | |
| Combination | JL05-2A24-10PC-F0-RK |
| Remarks | No contact (Sold separately) |

Notice

1. The values specified in this web site are only for reference. The products and their specifications are subject to change without notice. Contact our sales staff for further information before considering or ordering any of our products.
- For purchase, a product specification must be agreed upon.

2. Users are requested to provide protection circuits and redundancy circuits to ensure safety of the equipment, and sufficiently review the suitability of JAE's products to the equipment.
3. The products presented in this web site are designed for the uses recommended below.
We strongly suggest you contact our sales staff when considering use of any of the products in any other way than the recommended applications or for a specific use that requires an extremely high reliability.

(1) Applications that require consultation:

- * Please contact us if you are considering use involving a quality assurance program that you specify or that is peculiar to the industry, such as:

Automotive electrical components, train control, telecommunications devices (mainline), traffic light control, electric power, combustion control, fire prevention or security systems, disaster evention equipment, etc.

- * We may separately give you our support with a quality assurance program that you specify, when you think of a use such as :

Aviation or space equipment, submarine repeaters, nuclear power control systems, medical equipment for life support, etc.

(2) Recommended applications include:

- * Computers, office appliances, telecommunications devices (terminals, mobile units), measuring equipment, audiovisual equipment, home electric appliances, factory automation equipment, etc