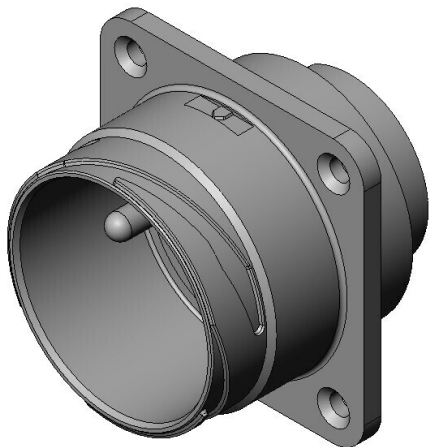


JL10-2E22-22PCE

Product Details



Features

One-touch mating circular connector, Compatible with TÜV, UL/ cUL recognized, Panel mount Receptacle, , 4 pos., Pin (Sold separately)

Part Number	JL10-2E22-22PCE
Status	Active
Number of Positions	4 pos.
Rated Current	46 A/pos.
Rated Voltage	AC 250 V, AC 500 V
Waterproof/ Non-waterproof	Waterproof (individually)
Applications	Industrial machineries, servo motors, robots, semiconductor-fabrication equipment, communication devices, measuring devices, broadcasting and various other equipment
Connector Type	Receptacle
Connector Style	Panel mount type
Contact Type	Pin (Sold separately)
Wire Termination Method	Crimp
Applicable Wire Size (AWG)	
Coupling Style	Bayonet lock/ Threaded dual type
Contact Size	#8

Shell Size	22
Contact Arrangement Code	22-22
Contact Size X No. of Contacts	#8*4
Alternative Insert Position (deg.)	0
Material of Contact	Copper alloy (Sold separately)
Finish of Contact in Connecting Area	Silver plating (Sold separately)
Dielectric Withstanding Voltage (1minute)	AC 2,000 V
Insulation Resistance	1,000 megohm min.
Mating Cycles	500 times
Applicable Contacts	CONT-JL10-08P-C*-PKG100
Applicable Accessory	Gasket(075-50159)
Applicable Product Part Numbers	
RoHS compliant	10 substances (2011/65/EU, (EU)2015/863)
REACH compliant	
Combination	<div>JL10-6A22-22SE</div> <div>JL10-6A22-22SE-EB</div> <div>JL10-6A22-22SE-EB1</div> <div>JL10-8A22-22SE-EB</div> <div>JL10-8A22-22SE-EB1</div> <div>JL04V-6A22-22SE-EB1-R</div> <div>JL04V-6A22-22SE-EB-R</div> <div>JL04V-6A22-22SE-R</div> <div>JL04V-8A22-22SE-EB1H-R</div> <div>JL04V-8A22-22SE-EBH-R</div> <div>JA06A-22-22S-J1-EB-R</div> <div>JA06A-22-22S-J1-R</div> <div>JA08A-22-22S-J1-EBH-RK</div>
Remarks	Without solder-cup on earth contact

Product Videos



Notice

1. The values specified in this web site are only for reference. The products and their specifications are subject to change without notice. Contact our sales staff for further information before considering or ordering any of our products.
For purchase, a product specification must be agreed upon.
2. Users are requested to provide protection circuits and redundancy circuits to ensure safety of the equipment, and sufficiently review the suitability of JAE's products to the equipment.
3. The products presented in this web site are designed for the uses recommended below.
We strongly suggest you contact our sales staff when considering use of any of the products in any other way than the recommended applications or for a specific use that requires an extremely high reliability.
 - (1) Applications that require consultation:
 - * Please contact us if you are considering use involving a quality assurance program that you specify or that is peculiar to the industry, such as:
Automotive electrical components, train control, telecommunications devices (mainline), traffic light control, electric power, combustion control, fire prevention or security systems, disaster evention equipment, etc.
 - * We may separately give you our support with a quality assurance program that you specify, when you think of a use such as :
Aviation or space equipment, submarine repeaters, nuclear power control systems, medical equipment for life support, etc.
 - (2) Recommended applications include:
 - * Computers, office appliances, telecommunications devices (terminals, mobile units), measuring equipment, audiovisual equipment, home electric appliances, factory automation equipment, etc