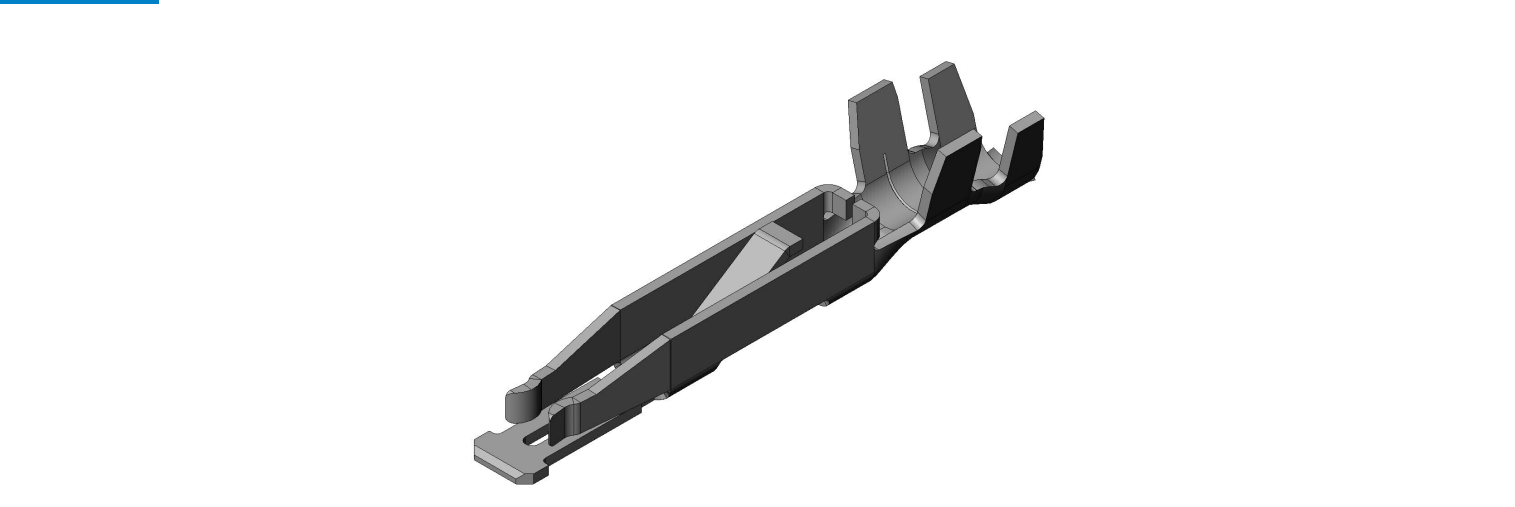


JN1-22-20S-R-10000

Product Details



Features

Small circular connector, Crimp type contacts. Socket, Contact , Strips (10,000 pieces/reel)

Part Number	JN1-22-20S-R-10000
Status	Active
Number of Positions	-
Rated Current	3A
Rated Voltage	
Waterproof/ Non-waterproof	
Applications	Industrial equipment interface
Connector Type	Contacts
Connector Style	
Contact Type	Socket
Wire Termination Method	Crimp
Applicable Wire Size (AWG)	21 to 20
Coupling Style	
Contact Size	#22
Shell Size	
Contact Arrangement Code	

Contact Size X No. of Contacts	
Applicable Wire (Cross-sectional Area of Conductor)	
Applicable Wire Insulation Diameter	1.5 mm max.
Polarizing Key Position	
Material of Contact	Copper alloy
Finish of Contact in Connecting Area	Gold plating over Nickel
Outer Shell Color	
Total Current Rating (A)	
Contact Resistance (milliohm)	
Dielectric Withstanding Voltage (1 minute)	
Insulation Resistance	
Mating Cycles	
Operating Temperature Range	
Applicable Contacts	
Applicable Housing	
Applicable Accessory	
Applicable Product Part Numbers	
Applicable Wire Diameter	
RoHS compliant	10 substances (2011/65/EU, (EU)2015/863)
REACH compliant	240 substances (23/01/2024)
Remarks	

Notice

1. The values specified in this web site are only for reference. The products and their specifications are subject to change without notice. Contact our sales staff for further information before

considering or ordering any of our products.

For purchase, a product specification must be agreed upon.

2. Users are requested to provide protection circuits and redundancy circuits to ensure safety of the equipment, and sufficiently review the suitability of JAE's products to the equipment.

3. The products presented in this web site are designed for the uses recommended below.

We strongly suggest you contact our sales staff when considering use of any of the products in any other way than the recommended applications or for a specific use that requires an extremely high reliability.

(1) Applications that require consultation:

- * Please contact us if you are considering use involving a quality assurance program that you specify or that is peculiar to the industry, such as:

Automotive electrical components, train control, telecommunications devices (mainline), traffic light control, electric power, combustion control, fire prevention or security systems, disaster evention equipment, etc.

- * We may separately give you our support with a quality assurance program that you specify, when you think of a use such as :

Aviation or space equipment, submarine repeaters, nuclear power control systems, medical equipment for life support, etc.

(2) Recommended applications include:

- * Computers, office appliances, telecommunications devices (terminals, mobile units), measuring equipment, audiovisual equipment, home electric appliances, factory automation equipment, etc