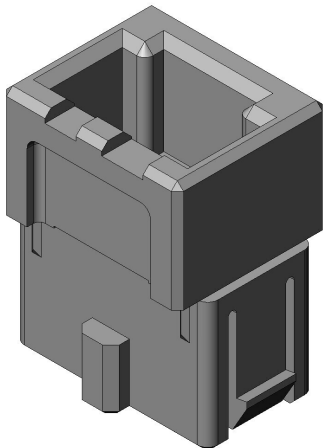


JN14CR02PM1

Product Details



Features

All-plastic, Low-profile, Waterproof connector, Compatible with TÜV, UL/ cUL recognized, Lock mechanism IP67 rated dust and waterproof (when mated), for compact servomotors, for brake, 2 pos., Panel mount receptacle

Part Number	JN14CR02PM1
Status	Active
Number of Positions	2
Rated Current (A)	1
Rated Voltage (V)	AC 100
Waterproof/ Non-waterproof	IP67 (when mated)
Applications	Industrial equipment, such as servo motors, machine tools, robots, communication equipment and other various applications.
Connector Type	Receptacle
Connector Style	Snap-in
Contact Type	Pin
Wire Termination Method	Crimp
Applicable Wire Size (AWG)	#24 to #22
Contact Size	#24
Shell Size	R

Applicable Wire Insulation Diameter (mm)	1.0 to 1.2 mm
Material of Contact	
Finish of Contact in Connecting Area	
Dielectric Withstanding Voltage (VACr.m.s. 1minute)	500
Insulation Resistance (megaohm min.)	100
Mating Cycles (times)	50
Operating Temperature Range (deg. C)	-40 to +125
Applicable Contacts	JN-24P-C1B-B1-10000
RoHS compliant	10 substances (2011/65/EU, (EU)2015/863)
REACH compliant	235 substances (14/06/2023)
Combination	JN14FR02SM1
Remarks	

Notice

1. The values specified in this web site are only for reference. The products and their specifications are subject to change without notice. Contact our sales staff for further information before considering or ordering any of our products.
For purchase, a product specification must be agreed upon.
2. Users are requested to provide protection circuits and redundancy circuits to ensure safety of the equipment, and sufficiently review the suitability of JAE's products to the equipment.
3. The products presented in this web site are designed for the uses recommended below.
We strongly suggest you contact our sales staff when considering use of any of the products in any other way than the recommended applications or for a specific use that requires an extremely high reliability.
 - (1) Applications that require consultation:
 - * Please contact us if you are considering use involving a quality assurance program that you specify or that is peculiar to the industry, such as:

Automotive electrical components, train control, telecommunications devices (mainline), traffic light control, electric power, combustion control, fire prevention or security systems, disaster evention equipment, etc.

* We may separately give you our support with a quality assurance program that you specify, when you think of a use such as :

Aviation or space equipment, submarine repeaters, nuclear power control systems, medical equipment for life support, etc.

(2) Recommended applications include:

* Computers, office appliances, telecommunications devices (terminals, mobile units), measuring equipment, audiovisual equipment, home electric appliances, factory automation equipment, etc