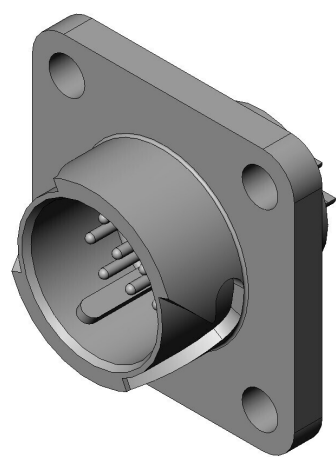


JN2AS10ML2-R

Product Details



Features

Small circular connector, 10 pos., Panel mount receptacle

Part Number	JN2AS10ML2-R
Status	Active
Number of Positions	10 pos.
Rated Current	3A
Rated Voltage	
Waterproof/ Non-waterproof	individually waterproofed
Applications	Industrial equipment interface
Connector Type	Panel mount receptacle
Connector Style	
Contact Type	Pin
Wire Termination Method	Soldering
Applicable Wire Size (AWG)	22 max.
Coupling Style	One-touch locking
Contact Size	#22
Shell Size	S
Contact Arrangement Code	

Contact Size X No. of Contacts	#22*10
Applicable Wire (Cross-sectional Area of Conductor)	
Applicable Wire Insulation Diameter	
Polarizing Key Position	Normal position
Material of Contact	copper alloy
Finish of Contact in Connecting Area	Gold plating
Outer Shell Color	Black
Total Current Rating (A)	
Contact Resistance (milliohm)	
Dielectric Withstanding Voltage (1 minute)	900VAC
Insulation Resistance	1,000MΩMIN
Mating Cycles	500 times
Operating Temperature Range	-20 Deg. C to +100 Deg. C
Applicable Contacts	
Applicable Housing	
Applicable Accessory	
Applicable Product Part Numbers	
Applicable Wire Diameter	
RoHS compliant	10 substances (2011/65/EU, (EU)2015/863)
REACH compliant	
Combination	JN1VDS10SL1 JN1VDS10SL2 JN1VFS10SL2 JN2VDS10SL2 JN1FS10SL1 JN1FS10SL2 JN1FS10SLK

	JN2DS10SL1-R
	JN2DS10SL2-R
	JN2DS10SL3-R
	JN2DS10SLK-R
	JN2DS10SLN-R
	JN2FS10SL1-R
	JN2FS10SL2-R
	JN2FS10SL3-R
	JN2FS10SLK-R
	JN2FS10SLN-R
	JN2MS10SL1-R
	JN2MS10SLK-R
	JN1DS10SL3
	JN1ES10SL1
	JN1DS10SL2
	JN1DS10SLK
	JN2VFS10SL2
	JN2VFS10SL1
	JN1VFS10SL1
	JN1DS10SL1
Remarks	Square Flange

Notice

- The values specified in this web site are only for reference. The products and their specifications are subject to change without notice. Contact our sales staff for further information before considering or ordering any of our products.
For purchase, a product specification must be agreed upon.
- Users are requested to provide protection circuits and redundancy circuits to ensure safety of the equipment, and sufficiently review the suitability of JAE's products to the equipment.
- The products presented in this web site are designed for the uses recommended below.
We strongly suggest you contact our sales staff when considering use of any of the products in any other way than the recommended applications or for a specific use that requires an extremely high reliability.
 - Applications that require consultation:
 - Please contact us if you are considering use involving a quality assurance program that you specify or that is peculiar to the industry, such as:

Automotive electrical components, train control, telecommunications devices (mainline), traffic light control, electric power, combustion control, fire prevention or security systems,

disaster evention equipment, etc.

* We may separately give you our support with a quality assurance program that you specify, when you think of a use such as :

Aviation or space equipment, submarine repeaters, nuclear power control systems, medical equipment for life support, etc.

(2) Recommended applications include:

* Computers, office appliances, telecommunications devices (terminals, mobile units), measuring equipment, audiovisual equipment, home electric appliances, factory automation equipment, etc