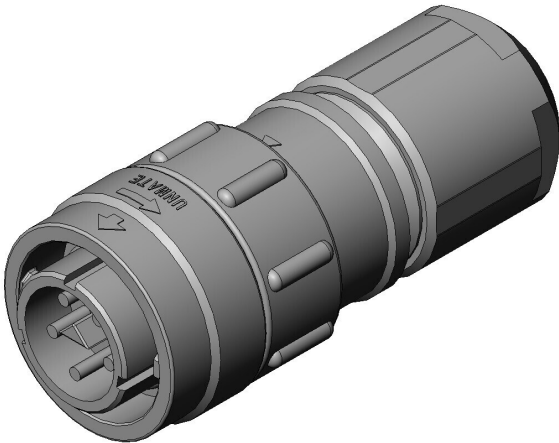


JN2DW05MH2

Product Details



Features

Plug, With bushing(Black), 5 pos.

Part Number	JN2DW05MH2
Status	Active
Number of Positions	5 pos.
Rated Current (A)	13 A
Rated Voltage (V)	AC 400
Waterproof/ Non-waterproof	Water proof (when mated)
Applications	industrial equipment
Connector Type	Plug
Connector Style	Straight
Contact Type	Pin
Wire Termination Method	Soldering
Applicable Wire Size (AWG)	14 max.
Coupling Style	One-touch locking
Contact Size	#16
Shell Size	W
Contact Arrangement Code	

Contact Size X No. of Contacts	#16*5
Applicable Wire (Cross-sectional Area of Conductor)	
Applicable Wire Insulation Diameter (mm)	
Material of Contact	Copper alloy
Finish of Contact in Connecting Area	Silver plating
Outer Shell Color	Black system interference color
Total Current Rating (A)	
Contact Resistance (milliohm)	
Dielectric Withstanding Voltage (VACr.m.s. 1minute)	2,000
Insulation Resistance (megaohm min.)	1,000
Mating Cycles (times)	500
Applicable Contacts	
Applicable Housing	
Applicable Accessory	
Applicable Product Part Numbers	
Applicable Wire Diameter	10 to 12 mm
RoHS compliant	10 substances (2011/65/EU, (EU)2015/863)
REACH compliant	
Combination	JN2HW05FH1 JN2KW05FH1 JN2LW05FH1 JN2KW05FH2
Remarks	

1. The values specified in this web site are only for reference. The products and their specifications are subject to change without notice. Contact our sales staff for further information before considering or ordering any of our products.

For purchase, a product specification must be agreed upon.

2. Users are requested to provide protection circuits and redundancy circuits to ensure safety of the equipment, and sufficiently review the suitability of JAE's products to the equipment.
3. The products presented in this web site are designed for the uses recommended below. We strongly suggest you contact our sales staff when considering use of any of the products in any other way than the recommended applications or for a specific use that requires an extremely high reliability.

(1) Applications that require consultation:

- * Please contact us if you are considering use involving a quality assurance program that you specify or that is peculiar to the industry, such as:

Automotive electrical components, train control, telecommunications devices (mainline), traffic light control, electric power, combustion control, fire prevention or security systems, disaster evention equipment, etc.

- * We may separately give you our support with a quality assurance program that you specify, when you think of a use such as :

Aviation or space equipment, submarine repeaters, nuclear power control systems, medical equipment for life support, etc.

(2) Recommended applications include:

- * Computers, office appliances, telecommunications devices (terminals, mobile units), measuring equipment, audiovisual equipment, home electric appliances, factory automation equipment, etc