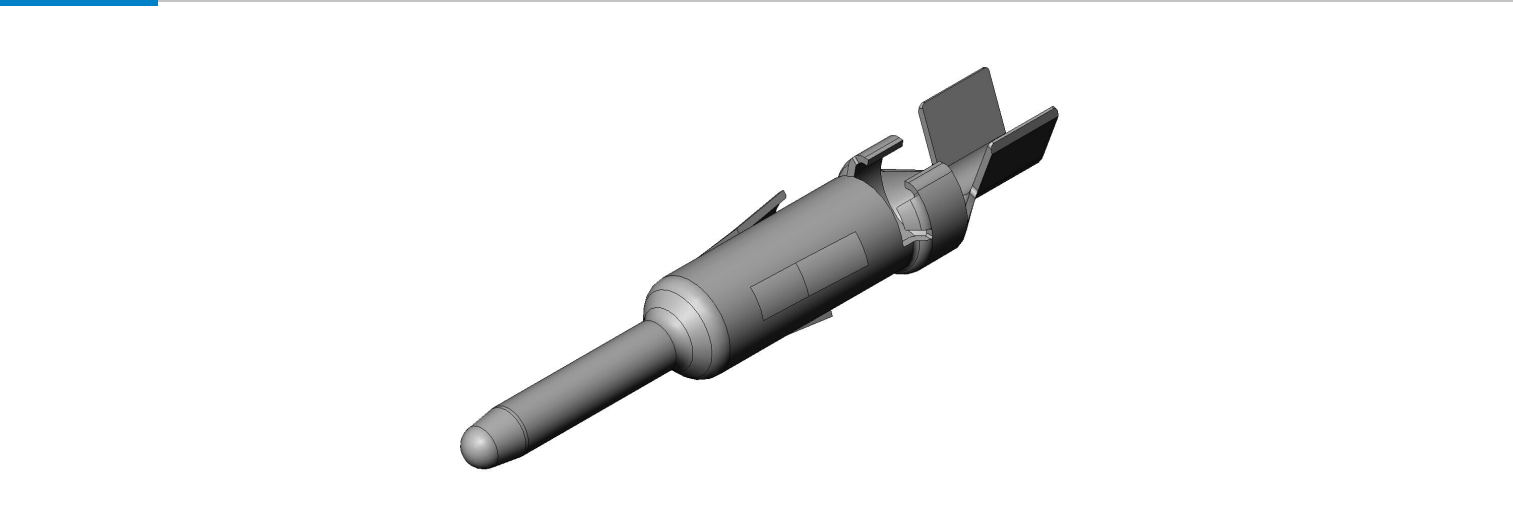


# KB1-12-PC2-2000

## Product Details



### Features

High-Current connector, for Solar Panel Module, 10 A max, Pin Contact

Part Number	KB1-12-PC2-2000
Status	Active(NRND)
Number of Positions	
Rated Current	10 A max.
Applications	Solar panel modules
Connector Type	Pin Contact
Connector Style	
Contact Type	Pin
Termination Style	Crimp
Coupling Style	
Contact Size	
Shell Size	
Applicable Wire (Cross-sectional Area of Conductor)	2 mm <sup>2</sup> to 2.5 mm <sup>2</sup>
Applicable Cable Outer Diameter	
Material of Contact	Copper alloy

Finish of Contact in Connecting Area	Silver plating
Contact Resistance	4 milliohm max.
Dielectric Withstanding Voltage (1 minute)	AC 6,000 Vr.m.s.
Operating Temperature Range	-40 Deg. C to +90 Deg. C
Applicable Contacts	
Applicable Housing	KB1JS01PG1, KB1JS01PG2
RoHS compliant	10 substances (2011/65/EU, (EU)2015/863)
REACH compliant	240 substances (23/01/2024)
Applicable Accessory	Reel (2000pcs/ reel)

Notice

1. The values specified in this web site are only for reference. The products and their specifications are subject to change without notice. Contact our sales staff for further information before considering or ordering any of our products.  
For purchase, a product specification must be agreed upon.
2. Users are requested to provide protection circuits and redundancy circuits to ensure safety of the equipment, and sufficiently review the suitability of JAE's products to the equipment.
3. The products presented in this web site are designed for the uses recommended below.  
We strongly suggest you contact our sales staff when considering use of any of the products in any other way than the recommended applications or for a specific use that requires an extremely high reliability.  
  - (1) Applications that require consultation:
    - \* Please contact us if you are considering use involving a quality assurance program that you specify or that is peculiar to the industry, such as:  
Automotive electrical components, train control, telecommunications devices (mainline), traffic light control, electric power, combustion control, fire prevention or security systems, disaster evention equipment, etc.
    - \* We may separately give you our support with a quality assurance program that you specify, when you think of a use such as :  
Aviation or space equipment, submarine repeaters, nuclear power control systems, medical equipment for life support, etc.
  - (2) Recommended applications include:

\* Computers, office appliances, telecommunications devices (terminals, mobile units), measuring equipment, audiovisual equipment, home electric appliances, factory automation equipment, etc