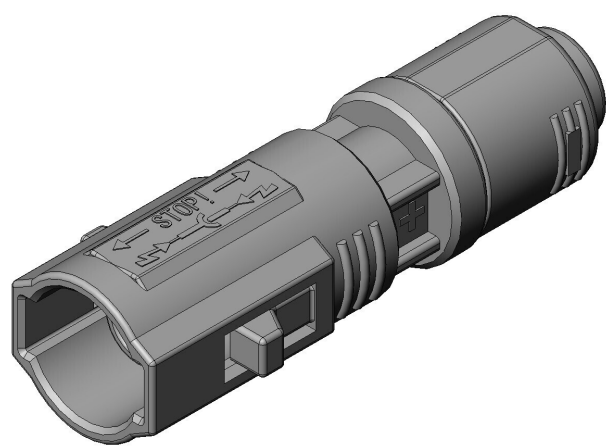


# KB1JS01SG2L

## Product Details



### Features

High-Current connector, for Solar Panel Module, Applicable Cable Outer Diameter 6.4 mm, Socket Connector

Part Number	KB1JS01SG2L
Status	Active(NRND)
Number of Positions	1 pos.
Rated Current	
Applications	Solar panel modules
Connector Type	Socket Connector
Connector Style	Straight
Contact Type	Socket
Termination Style	
Coupling Style	Push-lock
Contact Size	G
Shell Size	S
Applicable Wire (Cross-sectional Area of Conductor)	
Applicable Cable Outer Diameter	6.4 mm
Material of Contact	

Finish of Contact in Connecting Area	
Contact Resistance	
Dielectric Withstanding Voltage (1 minute)	
Operating Temperature Range	-40 Deg. C to +90 Deg. C
Applicable Contacts	KB1-12-SC-1500,KB1-12-SC2-2000
Applicable Housing	
RoHS compliant	10 substances (2011/65/EU, (EU)2015/863)
REACH compliant	
Combination	<a href="#">KB1JS01PG2</a>
Applicable Accessory	

#### Notice

1. The values specified in this web site are only for reference. The products and their specifications are subject to change without notice. Contact our sales staff for further information before considering or ordering any of our products.  
For purchase, a product specification must be agreed upon.
2. Users are requested to provide protection circuits and redundancy circuits to ensure safety of the equipment, and sufficiently review the suitability of JAE's products to the equipment.
3. The products presented in this web site are designed for the uses recommended below.  
We strongly suggest you contact our sales staff when considering use of any of the products in any other way than the recommended applications or for a specific use that requires an extremely high reliability.
  - (1) Applications that require consultation:
    - \* Please contact us if you are considering use involving a quality assurance program that you specify or that is peculiar to the industry, such as:  
Automotive electrical components, train control, telecommunications devices (mainline), traffic light control, electric power, combustion control, fire prevention or security systems, disaster evention equipment, etc.
    - \* We may separately give you our support with a quality assurance program that you specify, when you think of a use such as :  
Aviation or space equipment, submarine repeaters, nuclear power control systems, medical equipment for life support, etc.

(2) Recommended applications include:

- \* Computers, office appliances, telecommunications devices (terminals, mobile units), measuring equipment, audiovisual equipment, home electric appliances, factory automation equipment, etc