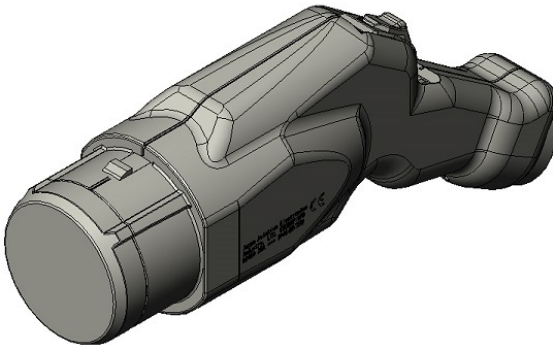


KW02GY10PDL0400B

Product Details



Features

Electrical vehicle charging and discharging connector, V2L (vehicle to load) and V2H (vehicle to home) systems, CE-Marking , Cable Length: 4,000 mm

Part Number	KW02GY10PDL0400B
Status	Active
Number of Positions	Power (power supply): 2 pos., 12V power: 2 pos., Signal: 6 pos.
Applicable Specifications	CHAdeMO
Applications	Electric Vehicle Charging and Discharging System (CHAdeMO protocol), V2H (Vehicle to Home), V2G (Vehicle to Grid) and others
Connector Type	EV charging and discharging system connector
Cable Length	4,000 mm
Shell Size	Y
Contact Size	D
Durability	more than 10,000 mating cycles
Mating Force	100 N max.
RoHS compliant	6 substances (2011/65/EU, (EU)2015/863)
REACH compliant	
Remarks	

Related information

Product Videos



Notice

1. The values specified in this web site are only for reference. The products and their specifications are subject to change without notice.
Contact our sales staff for further information before considering or ordering any of our products.
For purchase, a product specification must be agreed upon.
2. Please contact us if you are considering use involving a quality assurance program that you specify or that is peculiar to the industry. Also contact us regarding the details of use, usage, specification before considering or ordering any of our products.
3. Users are requested to provide protection circuits and redundancy circuits to ensure safety of the equipment, and sufficiently review the suitability of JAE's products to the equipment.