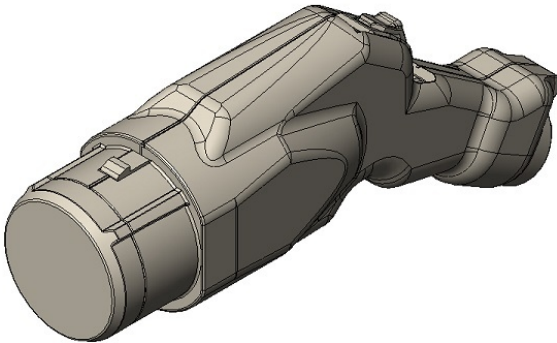


KW03GY10PDL0500E

Product Details



Features

CHAdeMO compliant electrical vehicle charging and discharging connector, CE Compliant Product, Cable Length: 5,000 mm
Note) The product contains PIP (3:1), a substance banned by TSCA.

Part Number	KW03GY10PDL0500E
Status	Please Contact Us
Number of Positions	Power supply (Charging): 2 pos., 12V power: 2 pos., Signal: 6 pos.
Applicable Specifications	CE Compliant Product
Applications	Electric Vehicle Charging and Discharging System (V2H Guidelines Ver.2.1compliant), Electric Vehicle Medium-speed Charger (CHAdeMO Ver1.2 compliant)
Connector Type	CHAdeMO compliant electrical vehicle charging and discharging connector
Cable Length	5,000 mm
Shell Size	Y
Contact Size	D
Durability	10,000 times
Insertion Force	100 N max.
RoHS compliant	
REACH compliant	
Remarks	This product contains PIP (3:1), a substance banned under the Toxic Substances Control Act (TSCA) regulations of the U.S. Environmental Protection Agency (EPA).

Notice

1. The values specified in this web site are only for reference. The products and their specifications are subject to change without notice.

Contact our sales staff for further information before considering or ordering any of our products.

For purchase, a product specification must be agreed upon.

2. Please contact us if you are considering use involving a quality assurance program that you specify or that is peculiar to the industry. Also contact us regarding the details of use, usage, specification before considering or ordering any of our products.
3. Users are requested to provide protection circuits and redundancy circuits to ensure safety of the equipment, and sufficiently review the suitability of JAE's products to the equipment.