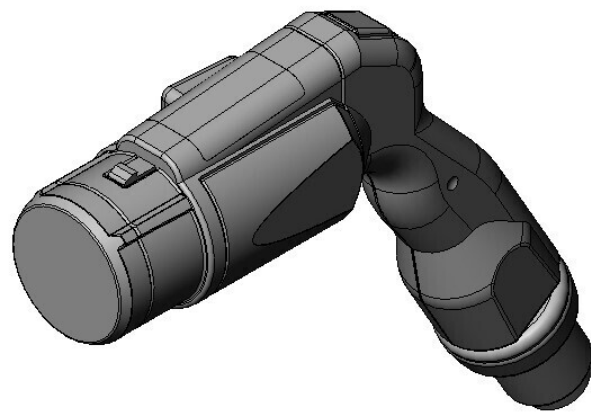


# KW1GY09PDL0500E1

## Product Details



### Features

Electric vehicle quick charger connector, Cable Length: 5,000 mm Note) The product contains PIP (3:1), a substance banned by TSCA.

Part Number	KW1GY09PDL0500E1
Status	Please Contact Us
Number of Positions	Power: 2 pos., Signal: 7 pos.
Applicable Specifications	CE Compliant Product
Applications	Electric Vehicle Quick Charger (CHAdeMO Protocol)
Connector Type	Electric vehicle quick charger connector
Cable Length	5,000 mm
Shell Size	Y
Contact Size	D
Durability	more than 10,000 mating cycles
Mating Force	100 N max.
RoHS compliant	
REACH compliant	
Remarks	This product contains PIP (3:1), a substance banned under the Toxic Substances Control Act (TSCA) regulations of the U.S. Environmental Protection Agency (EPA).

### Notice

1. The values specified in this web site are only for reference. The products and their specifications are subject to change without notice.

Contact our sales staff for further information before considering or ordering any of our products.

For purchase, a product specification must be agreed upon.

2. Please contact us if you are considering use involving a quality assurance program that you specify or that is peculiar to the industry. Also contact us regarding the details of use, usage, specification before considering or ordering any of our products.
3. Users are requested to provide protection circuits and redundancy circuits to ensure safety of the equipment, and sufficiently review the suitability of JAE's products to the equipment.