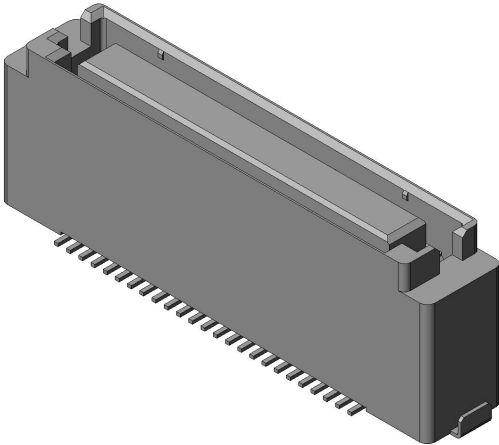


KX14-50K8D-E650E

Product Details



Features

0.8mm pitch, SMT, Parallel/ Vertical, 50 pos., Receptacle, Emboss reel product

Part Number	KX14-50K8D-E650E
Status	Active
Number of Positions	50 pos.
Contact Pitch (mm)	0.8 mm
Rated Current (A)	0.5 A
Connector Type	Receptacle
Connector Style	Straight
Number of Rows	2
PCB Mounting Method	Soldering (SMT)
Material of Contact	Copper alloy
Finish of Contact in Connecting Area	Gold plating over Nickel
Minimum Thickness of The Plating Contact Area (micrometer)	0.1
Finish of Contact in PCB Mounting Area	Gold flash plating over Nickel

Material of Insulator	Synthetic resin (UL94V-0)
PCB Mounted Height (mm)	9.55 mm
Existence of Polarization Key	available
Existence of Location Boss	available
PCB Boardlock Feature	Hold-down
Existence of Mounting Ears	available
Operating Temperature Range (deg. C)	-40 deg. C to +85 deg. C
Finish of Hold-down	Tin plating over Nickel
Packaging Type	Embossed tape packaging
Quantity in The Standard Packaging (pieces)	650 pieces/reel
RoHS compliant	10 substances (2011/65/EU, (EU)2015/863)
REACH compliant	240 substances (23/01/2024)
Combination	KX15-50K3D-E1000E KX15-50K4D-E1000E KX15-50KLDL-E1000E KX15-50KLNL-E1000 KX15-50K2D-E1000E
Remarks	

Notice

1. The values specified in this web site are only for reference. The products and their specifications are subject to change without notice. Contact our sales staff for further information before considering or ordering any of our products.
For purchase, a product specification must be agreed upon.
2. Users are requested to provide protection circuits and redundancy circuits to ensure safety of the equipment, and sufficiently review the suitability of JAE's products to the equipment.
3. The products presented in this web site are designed for the uses recommended below.
We strongly suggest you contact our sales staff when considering use of any of the products in any other way than the recommended applications or for a specific use that requires an extremely high reliability.

(1) Applications that require consultation:

- * Please contact us if you are considering use involving a quality assurance program that you specify or that is peculiar to the industry, such as:

Automotive electrical components, train control, telecommunications devices (mainline), traffic light control, electric power, combustion control, fire prevention or security systems, disaster evention equipment, etc.

- * We may separately give you our support with a quality assurance program that you specify, when you think of a use such as :

Aviation or space equipment, submarine repeaters, nuclear power control systems, medical equipment for life support, etc.

(2) Recommended applications include:

- * Computers, office appliances, telecommunications devices (terminals, mobile units), measuring equipment, audiovisual equipment, home electric appliances, factory automation equipment, etc