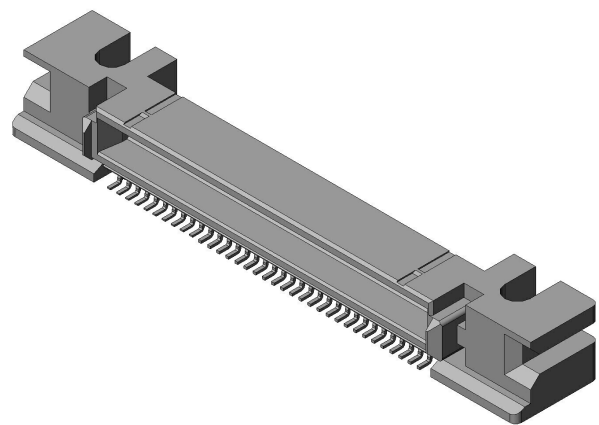


# KX15-70KLNL-E1000

## Product Details



### Features

0.8mm pitch, SMT, Vertical, 70 pos., Plug, Emboss reel product

Part Number	KX15-70KLNL-E1000
Status	Active
Number of Positions	70 pos.
Contact Pitch (mm)	0.8 mm
Rated Current (A)	0.5 A
Connector Type	Plug
Connector Style	Right angle
Number of Rows	2
PCB Mounting Method	Soldering (SMT)
Material of Contact	Copper alloy
Finish of Contact in Connecting Area	Gold plating over Nickel
Minimum Thickness of The Plating Contact Area (micrometer)	0.1
Finish of Contact in PCB Mounting Area	Gold flash plating over Nickel



\* Please contact us if you are considering use involving a quality assurance program that you specify or that is peculiar to the industry, such as:

Automotive electrical components, train control, telecommunications devices (mainline), traffic light control, electric power, combustion control, fire prevention or security systems, disaster evention equipment, etc.

\* We may separately give you our support with a quality assurance program that you specify, when you think of a use such as :

Aviation or space equipment, submarine repeaters, nuclear power control systems, medical equipment for life support, etc.

(2) Recommended applications include:

\* Computers, office appliances, telecommunications devices (terminals, mobile units), measuring equipment, audiovisual equipment, home electric appliances, factory automation equipment, etc