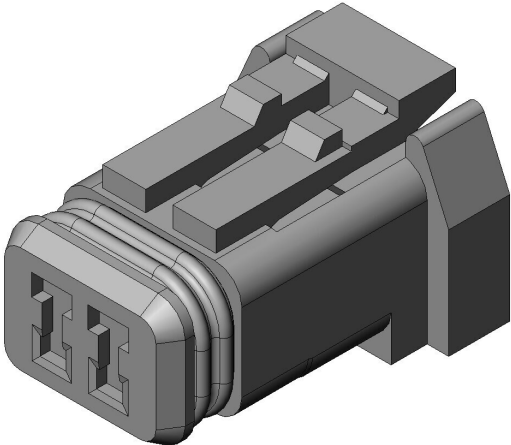


# MX19002S52

## Product Details



### Features

Compact automotive Connector, Cable-to-Cable(relay) application, 040 contacts, waterproof, 2 pos., Socket housing

Part Number	MX19002S52
Status	Active
Number of Positions	2 pos.
Contact Pitch (mm)	2.5 mm
Rated Current (A)	5A
Waterproof/ Non-waterproof	Waterproof
Connector Type	Socket housing
Contact Type	Socket
Wire Termination Style	
Applicable Wire Size (AWG)	
Material of Insulator	PBT
Color of Insulator	Gray
Material of Contact	-
Finish of Contact in Connecting Area	-
Finish of Contact in Terminal Area	

Applicable Cable Conductive Area (mm <sup>2</sup> )	
Applicable Cable Sheath Diameter (mm)	
Applicable Contacts	MX19S10K451
Hand Crimping Tool	
Contact Extraction Tool	
RoHS compliant	10 substances (2011/65/EU, (EU)2015/863)
REACH compliant	
Remarks	

Notice

1. The values specified in this web site are only for reference. The products and their specifications are subject to change without notice.  
Contact our sales staff for further information before considering or ordering any of our products.  
For purchase, a product specification must be agreed upon.

2. Please contact us if you are considering use involving a quality assurance program that you specify or that is peculiar to the industry. Also contact us regarding the details of use, usage, specification before considering or ordering any of our products.

3. Users are requested to provide protection circuits and redundancy circuits to ensure safety of the equipment, and sufficiently review the suitability of JAE's products to the equipment.