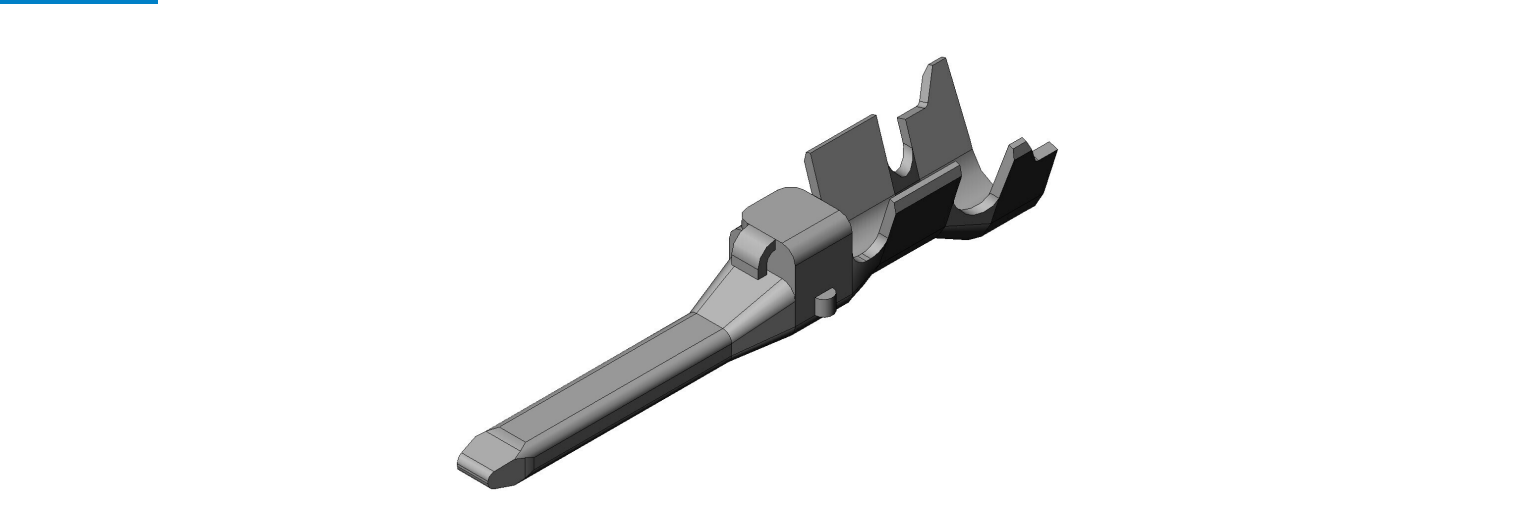


MX19P10K451

Product Details



Features

Compact automotive Connector, Cable-to-Cable(relay) application, 040 contacts, waterproof, Pin contact

Part Number	MX19P10K451
Status	Active
Number of Positions	-
Contact Pitch (mm)	-
Rated Current (A)	5A
Waterproof/ Non-waterproof	-
Connector Type	Pin contact
Contact Type	Pin
Wire Termination Style	Crimp
Applicable Wire Size (AWG)	#20 (AVSS), #22 to #20 (CAVS)
Material of Insulator	-
Color of Insulator	-
Material of Contact	High conductivity Copper alloy
Finish of Contact in Connecting Area	Tin plating
Finish of Contact in Terminal Area	Tin plating

Applicable Cable Conductive Area (mm ²)	AVSS 0.5 mm ² , CAVS: 0.3 to 0.5 mm ²
Applicable Cable Sheath Diameter (mm)	AVSS: 1.6 to 1.7 mm, CAVS: 1.4 to 1.7 mm
Applicable Contacts	
Hand Crimping Tool	CT150-4C-MX19
Contact Extraction Tool	ET-MX19
RoHS compliant	10 substances (2011/65/EU, (EU)2015/863)
REACH compliant	
Remarks	

Notice

1. The values specified in this web site are only for reference. The products and their specifications are subject to change without notice.
Contact our sales staff for further information before considering or ordering any of our products.
For purchase, a product specification must be agreed upon.
2. Please contact us if you are considering use involving a quality assurance program that you specify or that is peculiar to the industry. Also contact us regarding the details of use, usage, specification before considering or ordering any of our products.
3. Users are requested to provide protection circuits and redundancy circuits to ensure safety of the equipment, and sufficiently review the suitability of JAE's products to the equipment.