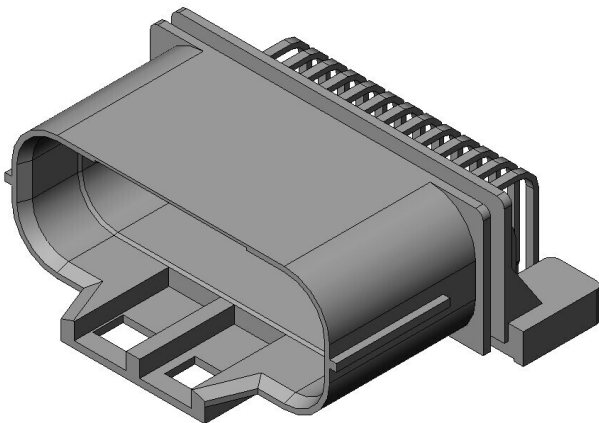


# MX23A26NF2

## Product Details



### Features

Compact automotive Connector, Low profil, Double fin structure, 040 contacts, waterproof, board-to-cable application, 26 pos., Right angle Pin header

Part Number	MX23A26NF2
Status	Active
Number of Positions	26 pos.
Waterproof/ Non-waterproof	Waterproof
Connector Type	Pin header
Connector Style	Right angle
Wire Termination Style	-
Applicable Wire Size (AWG)	-
PCB Mounting Method	Soldering (Through-hole)
Material of Insulator	Glass filled PBT
Color of Insulator	Black
Material of Contact	Copper alloy
Finish of Contact in Connecting Area	Tin plating
Finish of Contact in Terminal Area	

Finish of Contact in PCB Mounting Area	Tin plating
Applicable Cable Type	-
Applicable Cable Conductive Area (mm <sup>2</sup> )	-
Applicable Cable Sheath Diameter (mm)	-
Applicable Contacts	
Use with Accessories	
Applicable Product Part Numbers	
RoHS compliant	6 substances (2011/65/EU, (EU)2015/863)
REACH compliant	235 substances (14/06/2023)
Combination	<a href="#">MX23A26SF1</a>
Remarks	Reverse type

**Notice**

1. The values specified in this web site are only for reference. The products and their specifications are subject to change without notice.  
Contact our sales staff for further information before considering or ordering any of our products.  
For purchase, a product specification must be agreed upon.
2. Please contact us if you are considering use involving a quality assurance program that you specify or that is peculiar to the industry. Also contact us regarding the details of use, usage, specification before considering or ordering any of our products.
3. Users are requested to provide protection circuits and redundancy circuits to ensure safety of the equipment, and sufficiently review the suitability of JAE's products to the equipment.