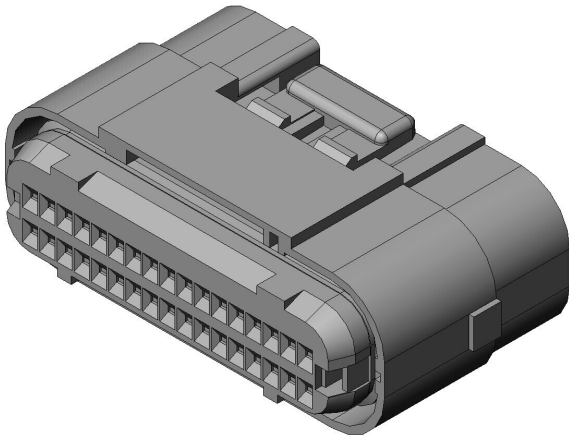


MX23A34SF2

Product Details



Features

Compact automotive Connector, Low profil, Double fin structure, 040 contacts, waterproof, board-to-cable application, 34 pos., Socket housing

Part Number	MX23A34SF2
Status	Active
Number of Positions	34 pos.
Waterproof/ Non-waterproof	Waterproof
Connector Type	Socket housing
Connector Style	-
Wire Termination Style	-
Applicable Wire Size (AWG)	-
PCB Mounting Method	-
Material of Insulator	Glass filled PBT
Color of Insulator	Gray
Material of Contact	-
Finish of Contact in Connecting Area	-
Finish of Contact in Terminal Area	-

Finish of Contact in PCB Mounting Area	-
Applicable Cable Type	
Applicable Cable Conductive Area (mm ²)	
Applicable Cable Sheath Diameter (mm)	
Applicable Contacts	M23S05K*
Use with Accessories	MX23A34XF1,M120-55780
Applicable Product Part Numbers	
RoHS compliant	10 substances (2011/65/EU, (EU)2015/863)
REACH compliant	
Combination	MX23A34NF6
Remarks	Key version type

Notice

1. The values specified in this web site are only for reference. The products and their specifications are subject to change without notice.
Contact our sales staff for further information before considering or ordering any of our products.
For purchase, a product specification must be agreed upon.
2. Please contact us if you are considering use involving a quality assurance program that you specify or that is peculiar to the industry. Also contact us regarding the details of use, usage, specification before considering or ordering any of our products.
3. Users are requested to provide protection circuits and redundancy circuits to ensure safety of the equipment, and sufficiently review the suitability of JAE's products to the equipment.