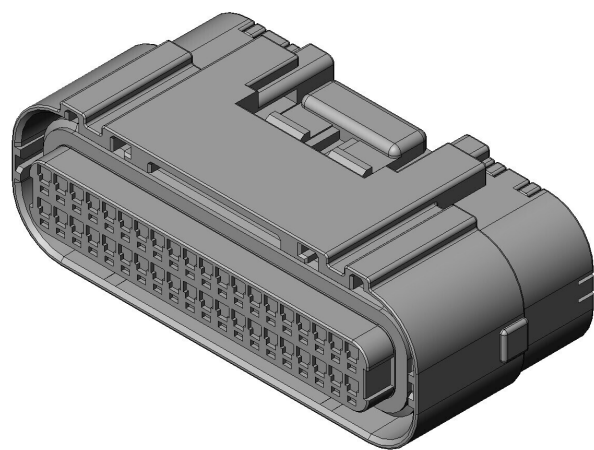


MX23A40SF1

Product Details



Features

Compact automotive Connector, Low profil, Double fin structure, 040 contacts, waterproof, board-to-cable application, 40 pos., Socket housing

| | |
|--------------------------------------|------------------|
| Part Number | MX23A40SF1 |
| Status | Active |
| Number of Positions | 40 pos. |
| Waterproof/ Non-waterproof | Waterproof |
| Connector Type | Socket housing |
| Connector Style | - |
| Wire Termination Style | - |
| Applicable Wire Size (AWG) | - |
| PCB Mounting Method | - |
| Material of Insulator | Glass filled PBT |
| Color of Insulator | Black |
| Material of Contact | - |
| Finish of Contact in Connecting Area | - |
| Finish of Contact in Terminal Area | - |

| | |
|---|--|
| Finish of Contact in PCB Mounting Area | - |
| Applicable Cable Type | |
| Applicable Cable Conductive Area (mm ²) | |
| Applicable Cable Sheath Diameter (mm) | |
| Applicable Contacts | M23S05K* |
| Use with Accessories | MX23A40XF1,M120-55780 |
| Applicable Product Part Numbers | |
| RoHS compliant | 10 substances (2011/65/EU, (EU)2015/863) |
| REACH compliant | 235 substances (14/06/2023) |
| Combination | MX23A40NF1 |
| Remarks | |

Notice

- The values specified in this web site are only for reference. The products and their specifications are subject to change without notice.

Contact our sales staff for further information before considering or ordering any of our products.

For purchase, a product specification must be agreed upon.
- Please contact us if you are considering use involving a quality assurance program that you specify or that is peculiar to the industry. Also contact us regarding the details of use, usage, specification before considering or ordering any of our products.
- Users are requested to provide protection circuits and redundancy circuits to ensure safety of the equipment, and sufficiently review the suitability of JAE's products to the equipment.