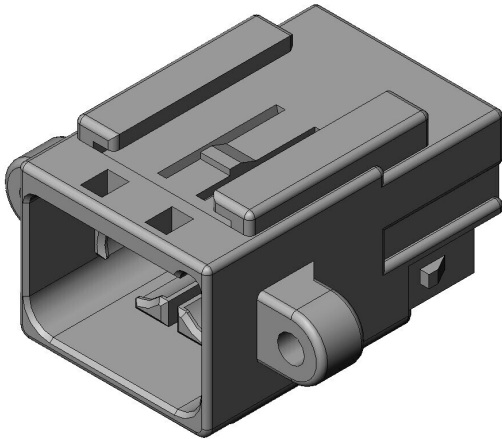


MX25002PN1

Product Details



Features

In-vehicle coaxial Connector, Board-to-Cable/ Cable-to-Cable(relay) application, 2 pos., Pin housin

Part Number	MX25002PN1
Status	Active
Number of Positions	2 pos.
Contact Pitch (mm)	6.7
Connector Type	Pin housing
Connector Style	-
Contact Type	Pin
Wire Termination Style	-
PCB Mounting Method	-
Material of Insulator	PBT
Color of Insulator	Black
Material of Contact	
Finish of Contact in Connecting Area	
Finish of Contact in Terminal Area	

Finish of Contact in PCB Mounting Area	
Applicable Cable Type	
RoHS compliant	10 substances (2011/65/EU, (EU)2015/863)
REACH compliant	240 substances (23/01/2024)
Remarks	

Notice

1. The values specified in this web site are only for reference. The products and their specifications are subject to change without notice.
Contact our sales staff for further information before considering or ordering any of our products.
For purchase, a product specification must be agreed upon.
2. Please contact us if you are considering use involving a quality assurance program that you specify or that is peculiar to the industry. Also contact us regarding the details of use, usage, specification before considering or ordering any of our products.
3. Users are requested to provide protection circuits and redundancy circuits to ensure safety of the equipment, and sufficiently review the suitability of JAE's products to the equipment.