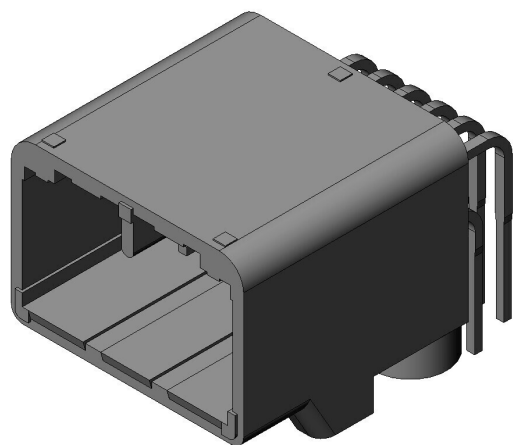


MX34012NF1

Product Details



Features

Compact non-waterproof automotive connector, High-density, ECU, switches, and sensors, 12 pos. Right angle Pin header

| | |
|-------------------------|--------------------------|
| Part Number | MX34012NF1 |
| Status | Active |
| Number of Positions | 12 pos. |
| Contact Pitch | 2.2 mm |
| Rated Current | 3 A |
| Connector Type | Pin header |
| Connector Style | Right angle |
| Contact Type | Pin |
| Wire Termination Style | - |
| PCB Side Mounting Style | Soldering (Through-hole) |
| Material of Insulator | Glass filled SPS |
| Color of Insulator | Gray |
| Material of Contact | Brass |
| Finish of Contact | Tin plating |
| Board Fixing Method | With screw hole |
| Applicable Contacts | - |

| | |
|-------------------------|--|
| Applicable Cable | - |
| Hand Crimping Tool | - |
| Contact Extraction Tool | - |
| RoHS compliant | 10 substances (2011/65/EU, (EU)2015/863) |
| REACH compliant | 235 substances (14/06/2023) |
| Combination | MX34012SF1 |
| Remarks | |

Related information

Product Videos



Notice

1. The values specified in this web site are only for reference. The products and their specifications are subject to change without notice.
Contact our sales staff for further information before considering or ordering any of our products.
For purchase, a product specification must be agreed upon.
2. Please contact us if you are considering use involving a quality assurance program that you specify or that is peculiar to the industry. Also contact us regarding the details of use, usage, specification before considering or ordering any of our products.
3. Users are requested to provide protection circuits and redundancy circuits to ensure safety of the equipment, and sufficiently review the suitability of JAE's products to the equipment.