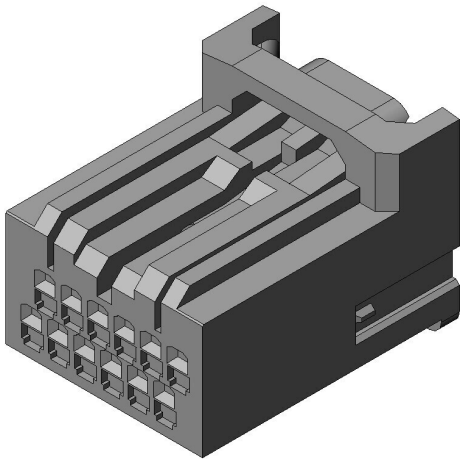


MX34012SF8

Product Details



Features

Compact non-waterproof automotive connector, High-density, ECU, switches, and sensors, 12 pos. Socket housing

Part Number	MX34012SF8
Status	Active
Number of Positions	12 pos.
Contact Pitch	2.2 mm
Rated Current	3 A
Connector Type	Socket housing
Connector Style	-
Contact Type	Socket
Wire Termination Style	-
PCB Side Mounting Style	-
Material of Insulator	PPE + PA66 (Alloy)
Color of Insulator	Black
Material of Contact	-
Finish of Contact	-
Board Fixing Method	-
Applicable Contacts	M34S75C4F*

Applicable Cable	-
Hand Crimping Tool	-
Contact Extraction Tool	-
RoHS compliant	10 substances (2011/65/EU, (EU)2015/863)
REACH compliant	235 substances (14/06/2023)
Remarks	This connector different from "MX34012SF1" in color.

Related information

Product Videos



Notice

1. The values specified in this web site are only for reference. The products and their specifications are subject to change without notice.
Contact our sales staff for further information before considering or ordering any of our products.
For purchase, a product specification must be agreed upon.
2. Please contact us if you are considering use involving a quality assurance program that you specify or that is peculiar to the industry. Also contact us regarding the details of use, usage, specification before considering or ordering any of our products.
3. Users are requested to provide protection circuits and redundancy circuits to ensure safety of the equipment, and sufficiently review the suitability of JAE's products to the equipment.