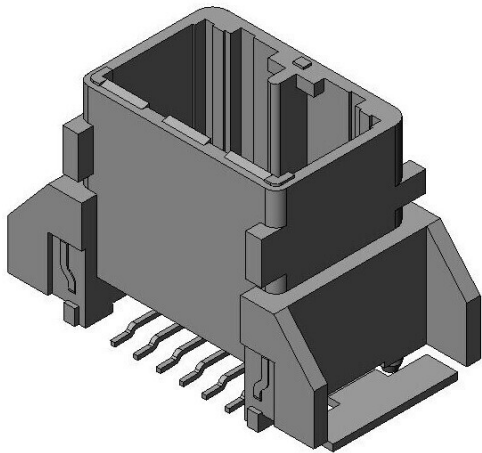


# MX34R12VF1

## Product Details



### Features

Compact non-waterproof automotive connector, High-density, ECU, switches, and sensors, 12 pos. Straight Pin header

Part Number	MX34R12VF1
Status	Active
Number of Positions	12 pos.
Contact Pitch	2.2 mm
Rated Current	3 A
Connector Type	Pin header
Connector Style	Straight
Contact Type	Pin
Wire Termination Style	-
PCB Side Mounting Style	Soldering (SMT)
Material of Insulator	Glass filled PPS
Color of Insulator	Black
Material of Contact	Copper alloy
Finish of Contact	Tin plating
Board Fixing Method	Hold-down
Applicable Contacts	-

Applicable Cable	-
Hand Crimping Tool	-
Contact Extraction Tool	-
RoHS compliant	10 substances (2011/65/EU, (EU)2015/863)
REACH compliant	233 substances (17/01/2023)
Combination	<a href="#">MX34012SF1</a>
Remarks	

## Related information

### Product Videos



### Notice

1. The values specified in this web site are only for reference. The products and their specifications are subject to change without notice.  
Contact our sales staff for further information before considering or ordering any of our products.  
For purchase, a product specification must be agreed upon.
2. Please contact us if you are considering use involving a quality assurance program that you specify or that is peculiar to the industry. Also contact us regarding the details of use, usage, specification before considering or ordering any of our products.
3. Users are requested to provide protection circuits and redundancy circuits to ensure safety of the equipment, and sufficiently review the suitability of JAE's products to the equipment.