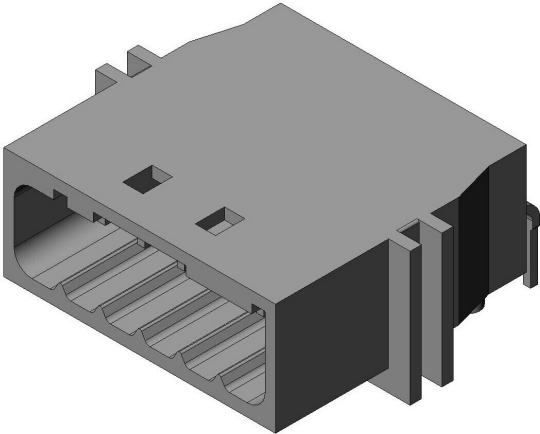


MX44006NF1

Product Details



Features

Compact waterproof automotive Connector with low pin counts, 6 pos., 3.5 mm side pitch, 1 row, Pin header

Part Number	MX44006NF1
Status	Active
Number of Positions	6 pos.
Contact Pitch (mm)	3.5 mm
Rated Current (A)	3A
Connector Type	Pin header
Connector Style	Right angle
Contact Type	Pin
Wire Termination Style	-
PCB Mounting Method	Soldering
Material of Insulator	Glass filled PBT
Color of Insulator	
Material of Contact	Brass
Finish of Contact in Connecting Area	Tin plating
Finish of Contact in Terminal Area	-

Finish of Contact in PCB Mounting Area	Tin plating
RoHS compliant	10 substances (2011/65/EU, (EU)2015/863)
REACH compliant	233 substances (17/01/2023)
Remarks	

Notice

1. The values specified in this web site are only for reference. The products and their specifications are subject to change without notice.
Contact our sales staff for further information before considering or ordering any of our products.
For purchase, a product specification must be agreed upon.
2. Please contact us if you are considering use involving a quality assurance program that you specify or that is peculiar to the industry. Also contact us regarding the details of use, usage, specification before considering or ordering any of our products.
3. Users are requested to provide protection circuits and redundancy circuits to ensure safety of the equipment, and sufficiently review the suitability of JAE's products to the equipment.