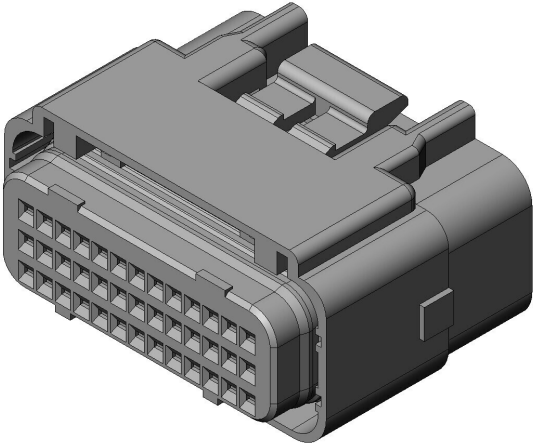


# MX47039SF2

## Product Details



### Features

Compact waterproof automotive Connector, Higher density, high pin count, 2.5 mm horizontal pitch, 3.6 mm vertical pitch, 39 pos., Socket housing

Part Number	MX47039SF2
Status	Active
Number of Positions	39 pos.
Connector Type	Socket housing
Connector Style	
Contact Type	Socket
Wire Termination Style	-
PCB Mounting Method	-
Material of Insulator	Glass filled PBT
Material of Contact	-
Finish of Contact in Connecting Area	-
Applicable Cable Type	
Applicable Cable Conductive Area (mm <sup>2</sup> )	
Applicable Cable Sheath	

Diameter (mm)	
Applicable Contacts	M47S65H*FA
Use with Accessories	MX47039XF1, M120-55780(Dummy plug)
Applicable Product Part Numbers	
RoHS compliant	10 substances (2011/65/EU, (EU)2015/863)
REACH compliant	235 substances (14/06/2023)
Combination	<a href="#">MX47039NF2</a>
Remarks	Different keying product

**Notice**

1. The values specified in this web site are only for reference. The products and their specifications are subject to change without notice.  
Contact our sales staff for further information before considering or ordering any of our products.  
For purchase, a product specification must be agreed upon.
2. Please contact us if you are considering use involving a quality assurance program that you specify or that is peculiar to the industry. Also contact us regarding the details of use, usage, specification before considering or ordering any of our products.
3. Users are requested to provide protection circuits and redundancy circuits to ensure safety of the equipment, and sufficiently review the suitability of JAE's products to the equipment.