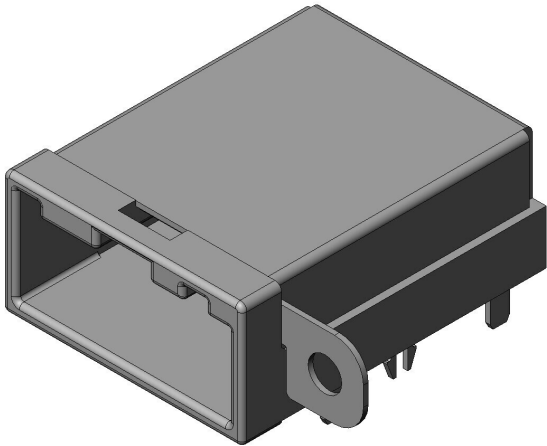


MX50A19NQ3

Product Details



Features

Automotive HDMI Type E Connector, 19 pos., Receptacle, With Flange, Key Type: 3

Part Number	MX50A19NQ3
Status	Active(NRND)
Number of Positions	19 pos.
Contact Pitch	1.5 mm
Rated Current	0.5 A/ pos.
Applications	Car navigation, Car audio applications, etc.
Connector Type	Receptacle
Connector Style	Right angle
Contact Type	Pin
PCB Mounting Method	Soldering (Through-hole)
Number of Rows	2-row
Polarization	Applicable
Locking Feature	Mechanical lock
Electro Magnetic Shield Function	Applicable
Applicable PCB Thickness	1.6 mm

Material of Insulator	Glass filled SPS, other
Material of Contact	Brass
Finish of Contact in Connecting Area	Gold plating
Finish of Contact in PCB Mounting Area	Tin plating
Shell Material/ Finish	Copper alloy / Tin plating, other
RoHS compliant	10 substances (2011/65/EU, (EU)2015/863)
REACH compliant	
Remarks	

Notice

1. The values specified in this web site are only for reference. The products and their specifications are subject to change without notice.
Contact our sales staff for further information before considering or ordering any of our products.
For purchase, a product specification must be agreed upon.
2. Please contact us if you are considering use involving a quality assurance program that you specify or that is peculiar to the industry. Also contact us regarding the details of use, usage, specification before considering or ordering any of our products.
3. Users are requested to provide protection circuits and redundancy circuits to ensure safety of the equipment, and sufficiently review the suitability of JAE's products to the equipment.