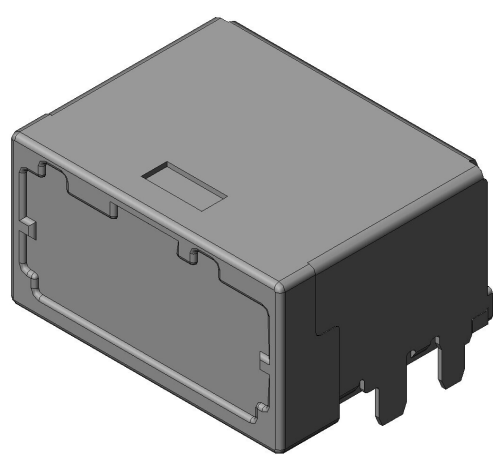


MX62010HQ1R100

Product Details



Features

Automotive Connector, USB3.0 High-speed transmission, 10 pos., pitch 2.0 mm, 2 row, PCB side connector

Part Number	MX62010HQ1R100
Status	Active
Number of Positions	10 pos.
Contact Pitch (mm)	2.0 mm
Rated Current (A)	3 A (Power/ GND line)
Connector Type	PCB side connector
Connector Style	Right angle
Contact Type	Pin
Number of Rows	2
PCB Side Mounting Style	Soldering (SMT)
Dielectric Withstanding Voltage (when mated)	AC 1,000 V (applied for 1 minute)
Insulation Resistance (when mated)	100 megohm min.
Contact Resistance (Initial)	8 milliohm max.
Applicable PCB Thickness	1.6 mm
Operating Temperature Range	-40 deg. C to +85 deg. C

Material of Contact	Brass
Finish of Contact in Connecting Area	Gold plating
Finish of Contact in Terminal Area	Tin plating
Material of Outer Housing	PPS-GF40 Black
Material of Inner Housing	LCP-GF35 Black
Material of Inner Shell	Copper alloy / Tin plating
Material of Outer Shell	Brass/ Tin plating
Packaging Type	Embossed tape packaging, 100 pieces/reel
RoHS compliant	10 substances (2011/65/EU, (EU)2015/863)
REACH compliant	233 substances (17/01/2023)
Remarks	KEY TYPE-A

Notice

1. The values specified in this web site are only for reference. The products and their specifications are subject to change without notice.
Contact our sales staff for further information before considering or ordering any of our products.
For purchase, a product specification must be agreed upon.
2. Please contact us if you are considering use involving a quality assurance program that you specify or that is peculiar to the industry. Also contact us regarding the details of use, usage, specification before considering or ordering any of our products.
3. Users are requested to provide protection circuits and redundancy circuits to ensure safety of the equipment, and sufficiently review the suitability of JAE's products to the equipment.