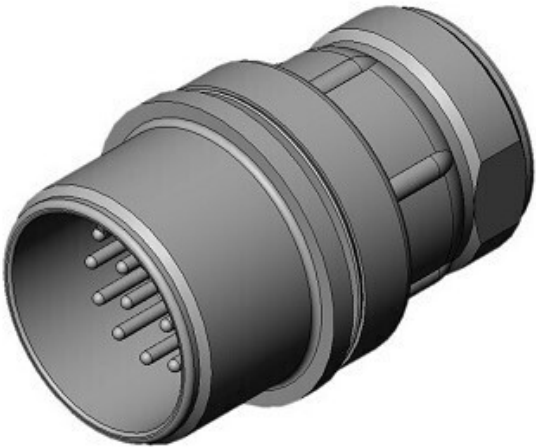


# N/MS3101B20-29P

## Product Details



### Features

Circular connector, MIL-DTL-5015 compliant and MS-connector compatible Standard, 17 pos, In-line receptacle Pin

|                            |  |
|----------------------------|--|
| Part Number                | N/MS3101B20-29P  |
| Status                     | Active   |
| Number of Positions        | 17 pos.  |
| Rated Current (A)          | 13 A   |
| Rated Voltage (V)          | 700 VDC, 500 VAC   |
| Waterproof/ Non-waterproof | Non-waterproof   |
| Applications               | Aircraft-related equipment, industrial equipment, machine tools, FA equipment, communication equipment, broadcasting equipment, measuring equipment, medical equipment, computers and related equipment, and other various electronic and electrical equipment |
| Connector Type             | Receptacle   |
| Connector Style            | In-line  |
| Contact Type               | Pin  |
| Wire Termination Method    | Soldering  |
| Applicable Wire Size (AWG) | #16 MAX.   |
| Coupling Style             | Threaded   |
| Contact Size               | #16  |

|   |  |
|---|--|
| Shell Size  | 20                                       |
| Contact Arrangement Code                            | 20-29                                    |
| Contact Size X No. of Contacts                      | #16*17                                   |
| Applicable Wire (Cross-sectional Area of Conductor) | 1.25mm <sup>2</sup> MAX.                 |
| Applicable Wire Insulation Diameter (mm)            |  |
| Alternative Insert Position (deg.)                  | 0  |
| Material of Contact                                 | Copper alloy                             |
| Finish of Contact in Connecting Area                | Silver plating                           |
| Outer Shell Color                                   |  |
| Total Current Rating (A)                            | 44.2                                     |
| Contact Resistance (milliohm)                       |  |
| Dielectric Withstanding Voltage (VACr.m.s. 1minute) | 2000                                     |
| Insulation Resistance (megaohm min. )               | 5000                                     |
| Mating Cycles (times)                               |  |
| Operating Temperature Range (deg. C)                | -55 deg. C to +125 deg. C                |
| Applicable Contacts                                 |  |
| Applicable Housing                                  |  |
| Applicable Accessory                                |  |
| Applicable Product Part Numbers                     |  |
| Applicable Wire Diameter                            |  |
| RoHS compliant                                      | 10 substances (2011/65/EU, (EU)2015/863) |
| REACH compliant                                     |  |

|             |  |
|-------------|--|
| Combination | <a href="#">JA06A-20-29S-J1-EB-RK</a><br><a href="#">JA06A-20-29S-J1-R</a><br><a href="#">N/MS3106B20-29S</a><br><a href="#">N/MS3108B20-29S</a> |
| Remarks     |  |

Notice

1. The values specified in this web site are only for reference. The products and their specifications are subject to change without notice. Contact our sales staff for further information before considering or ordering any of our products.  
For purchase, a product specification must be agreed upon.
2. Users are requested to provide protection circuits and redundancy circuits to ensure safety of the equipment, and sufficiently review the suitability of JAE's products to the equipment.
3. The products presented in this web site are designed for the uses recommended below.  
We strongly suggest you contact our sales staff when considering use of any of the products in any other way than the recommended applications or for a specific use that requires an extremely high reliability.
  - (1) Applications that require consultation:
    - \* Please contact us if you are considering use involving a quality assurance program that you specify or that is peculiar to the industry, such as:  
Automotive electrical components, train control, telecommunications devices (mainline), traffic light control, electric power, combustion control, fire prevention or security systems, disaster evention equipment, etc.
    - \* We may separately give you our support with a quality assurance program that you specify, when you think of a use such as :  
Aviation or space equipment, submarine repeaters, nuclear power control systems, medical equipment for life support, etc.
  - (2) Recommended applications include:
    - \* Computers, office appliances, telecommunications devices (terminals, mobile units), measuring equipment, audiovisual equipment, home electric appliances, factory automation equipment, etc