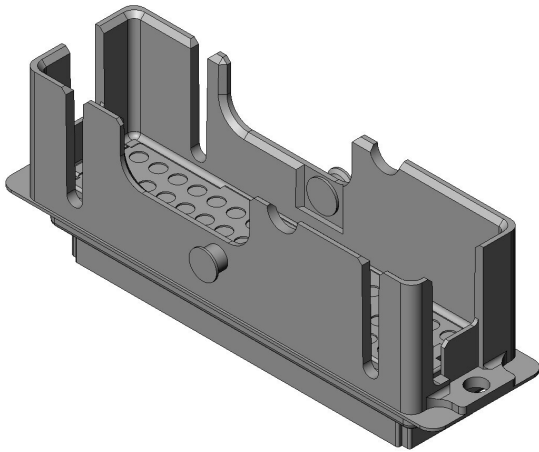


QE2R050M01

Product Details



Features

Rectangular connector, lever mating type, for panel-to-cable/ board-to-cable, 50 pos., for pin contacts, Receptacle (reinforced shell type)

Part Number	QE2R050M01
Status	Active
Number of Positions	50 pos.
Rated Current (A)	13 A
Connector Type	Receptacle
Connector Style	
Contact Type	Pin
Wire Termination Style	Crimp
Applicable Wire Size (AWG)	#14 to #24
Applicable Wire Size (mm ²)	0.2 to 2
Applicable Wire Insulation Diameter (mm)	2.4 max.(#14 to #20) 、 2.6 max.(#20 to #24)
Material of Insulator	Synthetic resin (Green)
Material of Contact	Copper alloy
Finish of Contact in Connecting Area	Gold plating over Nickel

Minimum Thickness of The Plating Contact Area (micrometer)	
Finish of Contact in PCB Mounting Area	
Mounting-side Contact Length (mm)	
Accessory Type	
Applicable Contacts	031-50793,031-5056*,031-50793-002,031-5056*-002,031-5541*
Applicable Product Part Numbers	
Mate to Contact	031-50794,031-5067*,031-50794-002,031-5067*-002
Use with Accessories	QE-POL-POST,J025-52212
RoHS compliant	10 substances (2011/65/EU, (EU)2015/863)
REACH compliant	
Combination	QE4501A50S-F0 QE4G050F01 QE4E050F01 QE4301-50S-F0 QE4301A50S-F0 QE4501-50S-F0
Remarks	

Notice

1. The values specified in this web site are only for reference. The products and their specifications are subject to change without notice. Contact our sales staff for further information before considering or ordering any of our products.
For purchase, a product specification must be agreed upon.
2. Users are requested to provide protection circuits and redundancy circuits to ensure safety of the equipment, and sufficiently review the suitability of JAE's products to the equipment.
3. The products presented in this web site are designed for the uses recommended below.
We strongly suggest you contact our sales staff when considering use of any of the products in

any other way than the recommended applications or for a specific use that requires an extremely high reliability.

(1) Applications that require consultation:

* Please contact us if you are considering use involving a quality assurance program that you specify or that is peculiar to the industry, such as:

Automotive electrical components, train control, telecommunications devices (mainline), traffic light control, electric power, combustion control, fire prevention or security systems, disaster evention equipment, etc.

* We may separately give you our support with a quality assurance program that you specify, when you think of a use such as :

Aviation or space equipment, submarine repeaters, nuclear power control systems, medical equipment for life support, etc.

(2) Recommended applications include:

* Computers, office appliances, telecommunications devices (terminals, mobile units), measuring equipment, audiovisual equipment, home electric appliances, factory automation equipment, etc