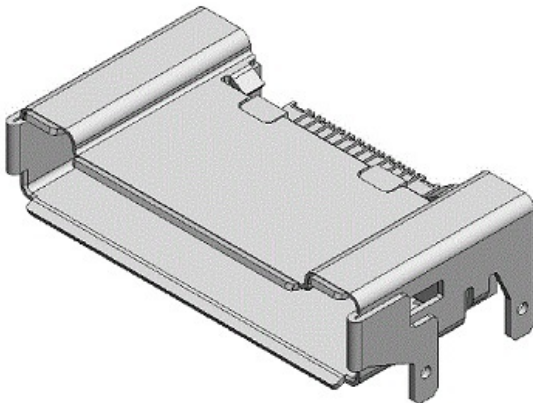


RP04R026JA1

Product Details



Features

Input/Output (IO) connector, Hybrid AOC (Active Optical Cable) for high-speed transmission and Power supply, 26 pos. (Signal: 22, Power: 4), Receptacle

Part Number	RP04R026JA1
Status	Active
Number of Positions	26 pos. (Signal: 22, Power: 4)
Contact Pitch (mm)	0.5
Rated Current (A)	2 (Total)
Waterproof/ Non-waterproof	Non-waterproof
Applications	Audio visual devices like HMD (Head Mount Display), Communication devices, Medical equipment, Industrial devices.
Connector Type	Receptacle
Connector Style	Right angle
Contact Type	Pin
Number of Rows	2
PCB Mounting Method	Soldering (SMT)
PCB Side Connector Style	Right angle
Material of Contact	Copper alloy

Finish of Contact in Connecting Area	Gold plating over Nickel
Finish of Contact in PCB Mounting Area	Gold flash plating over Nickel
Material of Insulator	Synthetic resin
Material of Shell	Stainless-steel
Finish of Shell	Tin/Tin-alloy
Operating Temperature Range (deg. C)	0 deg. C to +60 deg. C
RoHS compliant	10 substances (2011/65/EU, (EU)2015/863)
REACH compliant	240 substances (23/01/2024)
Remarks	

Related information

Product Videos

Notice

1. The values specified in this web site are only for reference. The products and their specifications are subject to change without notice. Contact our sales staff for further information before considering or ordering any of our products.
For purchase, a product specification must be agreed upon.
2. Users are requested to provide protection circuits and redundancy circuits to ensure safety of the equipment, and sufficiently review the suitability of JAE's products to the equipment.
3. The products presented in this web site are designed for the uses recommended below.
We strongly suggest you contact our sales staff when considering use of any of the products in any other way than the recommended applications or for a specific use that requires an extremely high reliability.
(1) Applications that require consultation:
 - * Please contact us if you are considering use involving a quality assurance program that you specify or that is peculiar to the industry, such as:
Automotive electrical components, train control, telecommunications devices (mainline), traffic light control, electric power, combustion control, fire prevention or security systems, disaster evention equipment, etc.

* We may separately give you our support with a quality assurance program that you specify, when you think of a use such as :

Aviation or space equipment, submarine repeaters, nuclear power control systems, medical equipment for life support, etc.

(2) Recommended applications include:

* Computers, office appliances, telecommunications devices (terminals, mobile units), measuring equipment, audiovisual equipment, home electric appliances, factory automation equipment, etc

4. The products presented in this web site include some products (or components) that fall into the category of "restricted export items" prescribed in Foreign Exchange and Foreign Trade Law. Export permission by the Japanese government is required for exporting or taking any of these products out of Japan. Please contact our sales staff for these items.