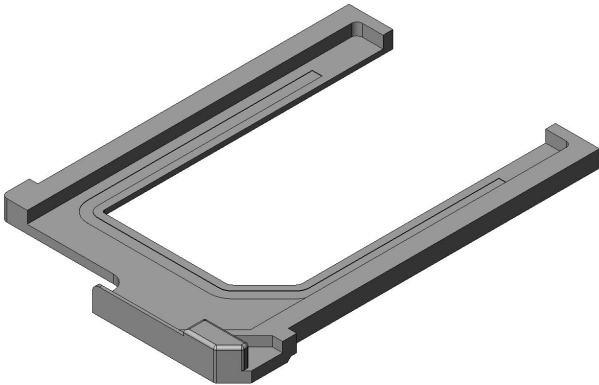


# SF9-ST51-A

## Product Details



### Features

Plug in SIM Card connector, compatible to GSM 11.11 standard, 6 pos.1.8mm height, Tray

Part Number	SF9-ST51-A
Status	Active
Number of Positions	-
Connector Type	Slide tray
Card Detection Switch	無し
PCB Mounting Style	
PCB Mounted Height (mm)	2.2
Body Length (mm)	26.5
Body Breadth (mm)	18.9
Material of Contact	
Finish of Contact in Connecting Area	
Finish of Contact in Terminal Area	
Material of Housing	Synthetic resin
Shell Material/ Finish of Surface	

Rated Current (A)	
Contact Resistance (milliohm max.)	
Insulation Resistance (megaohm min.)	
Dielectric Withstanding Voltage (V 1minute)	
Mating Cycles (times)	
PCB Retention Feature	
Packaging Type	Tray
Quantity in The Standard Packaging (pieces)	
Use with Accessories	
RoHS compliant	10 substances (2011/65/EU, (EU)2015/863)
REACH compliant	
Remarks	

**Notice**

1. The values specified in this web site are only for reference. The products and their specifications are subject to change without notice. Contact our sales staff for further information before considering or ordering any of our products.  
For purchase, a product specification must be agreed upon.
2. Users are requested to provide protection circuits and redundancy circuits to ensure safety of the equipment, and sufficiently review the suitability of JAE's products to the equipment.
3. The products presented in this web site are designed for the uses recommended below.  
We strongly suggest you contact our sales staff when considering use of any of the products in any other way than the recommended applications or for a specific use that requires an extremely high reliability.  
(1) Applications that require consultation:
  - \* Please contact us if you are considering use involving a quality assurance program that you specify or that is peculiar to the industry, such as:  
Automotive electrical components, train control, telecommunications devices (mainline), traffic light control, electric power, combustion control, fire prevention or security systems, disaster evention equipment, etc.

\* We may separately give you our support with a quality assurance program that you specify, when you think of a use such as :

Aviation or space equipment, submarine repeaters, nuclear power control systems, medical equipment for life support, etc.

(2) Recommended applications include:

\* Computers, office appliances, telecommunications devices (terminals, mobile units), measuring equipment, audiovisual equipment, home electric appliances, factory automation equipment, etc