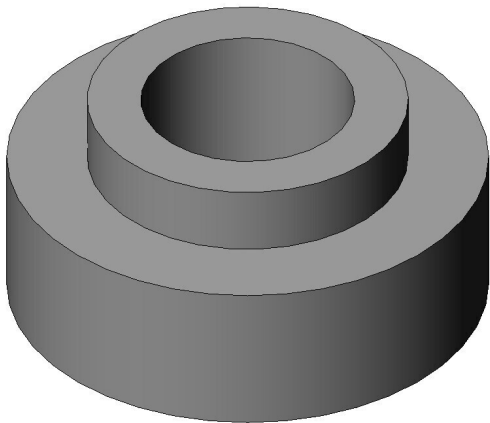


# SM3ZS067U310-NUT1-R1800

## Product Details



### Features

On-board mounting type, PCI-SIG M.2 Specification compatible, Compatible Connector: SM3ZS067U310\*, nut

Part Number	SM3ZS067U310-NUT1-R1800
Status	Active
Number of Positions	-
Connector Type	Stud nut
Mounting Type	
Polarizing Key	
PCB Mounted Height	
Material of Contact	
Finish of Contact in Connecting Area	
Minimum Thickness of The Plating Contact Area	
Applicable Connector	
Finish of Contact in PCB Mounting Area	
Module Mounting Style	
Board Fixing Method	

Depth	
Height	
Width	
Rated Current	
Contact Resistance	
Dielectric Withstanding Voltage (1 minute)	
Insulation Resistance (Initial)	
Material of Insulator	
Mating Cycles	
Operating Temperature Range	
Packaging Type	Embossed tape packaging
Quantity in The Standard Packaging	1,800 pieces/reel
RoHS compliant	10 substances (2011/65/EU, (EU)2015/863)
REACH compliant	
Remarks	Compatible Connector: SM3ZS067U310*

**Notice**

1. The values specified in this web site are only for reference. The products and their specifications are subject to change without notice. Contact our sales staff for further information before considering or ordering any of our products.  
For purchase, a product specification must be agreed upon.
2. Users are requested to provide protection circuits and redundancy circuits to ensure safety of the equipment, and sufficiently review the suitability of JAE's products to the equipment.
3. The products presented in this web site are designed for the uses recommended below.  
We strongly suggest you contact our sales staff when considering use of any of the products in any other way than the recommended applications or for a specific use that requires an extremely high reliability.  
(1) Applications that require consultation:  
\* Please contact us if you are considering use involving a quality assurance program that you specify or that is peculiar to the industry, such as:

Automotive electrical components, train control, telecommunications devices (mainline), traffic light control, electric power, combustion control, fire prevention or security systems, disaster evention equipment, etc.

\* We may separately give you our support with a quality assurance program that you specify, when you think of a use such as :

Aviation or space equipment, submarine repeaters, nuclear power control systems, medical equipment for life support, etc.

(2) Recommended applications include:

\* Computers, office appliances, telecommunications devices (terminals, mobile units), measuring equipment, audiovisual equipment, home electric appliances, factory automation equipment, etc