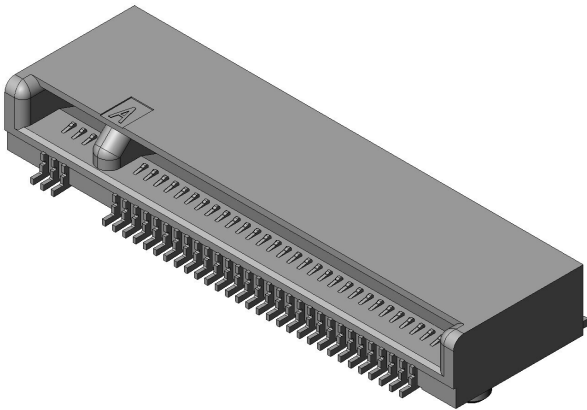


# SM3ZS067U310BAR1200

## Product Details



### Features

On-board mounting type, PCI-SIG M.2 Specification compatible, Key position type: A, 67 pos., 0.5 mm pitch (2 row), 3.10 mm PCB mounted height

Part Number	SM3ZS067U310BAR1200
Status	Active
Number of Positions	67 pos.
Connector Type	Card edge connector
Mounting Type	On-board mounting type
Polarizing Key	A
PCB Mounted Height	3.10 mm
Material of Contact	Copper alloy
Finish of Contact in Connecting Area	Gold plating over Nickel
Minimum Thickness of The Plating Contact Area	0.25 micrometer
Applicable Connector	
Finish of Contact in PCB Mounting Area	Gold flash plating over Nickel
Module Mounting Style	Standard

Board Fixing Method	Surface mounted
Depth	7.6 mm
Height	3.1 mm
Width	21.9 mm
Rated Current	0.5 A/pin
Contact Resistance	55 milliohm max.
Dielectric Withstanding Voltage (1 minute)	AC 300 Vr.m.s.
Insulation Resistance (Initial)	500 megohm min.
Material of Insulator	Heat resisting plastic
Mating Cycles	60 times
Operating Temperature Range	-40 deg. C to +80 deg. C
Packaging Type	Embossed tape packaging
Quantity in The Standard Packaging	1200 pieces/reel
RoHS compliant	10 substances (2011/65/EU, (EU)2015/863)
REACH compliant	
Remarks	

**Notice**

1. The values specified in this web site are only for reference. The products and their specifications are subject to change without notice. Contact our sales staff for further information before considering or ordering any of our products.  
For purchase, a product specification must be agreed upon.
2. Users are requested to provide protection circuits and redundancy circuits to ensure safety of the equipment, and sufficiently review the suitability of JAE's products to the equipment.
3. The products presented in this web site are designed for the uses recommended below.  
We strongly suggest you contact our sales staff when considering use of any of the products in any other way than the recommended applications or for a specific use that requires an extremely high reliability.  
(1) Applications that require consultation:

\* Please contact us if you are considering use involving a quality assurance program that you specify or that is peculiar to the industry, such as:

Automotive electrical components, train control, telecommunications devices (mainline), traffic light control, electric power, combustion control, fire prevention or security systems, disaster evention equipment, etc.

\* We may separately give you our support with a quality assurance program that you specify, when you think of a use such as :

Aviation or space equipment, submarine repeaters, nuclear power control systems, medical equipment for life support, etc.

(2) Recommended applications include:

\* Computers, office appliances, telecommunications devices (terminals, mobile units), measuring equipment, audiovisual equipment, home electric appliances, factory automation equipment, etc